



Beyond the Pages Independent Living Facility

2026 Womack Road
Dunwoody, GA



952.693.6525
516 Drayton St.
Savannah, GA 31401

Beyond the Pages

2026 Womack Road
Dunwoody, GA 30338

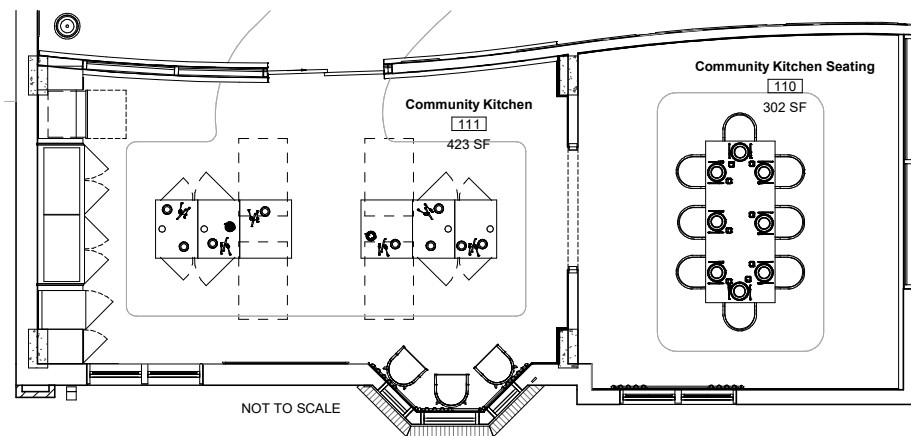
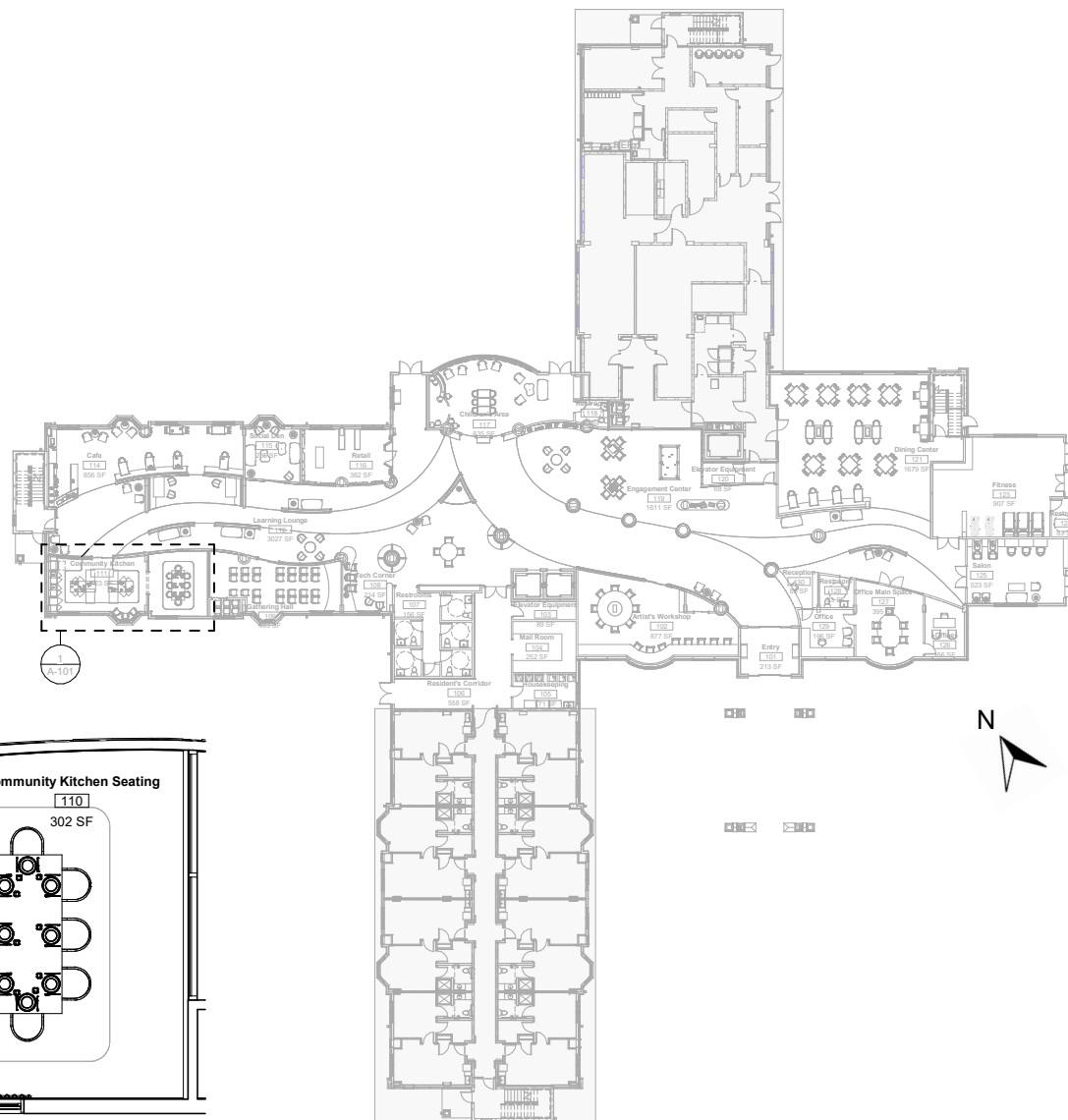
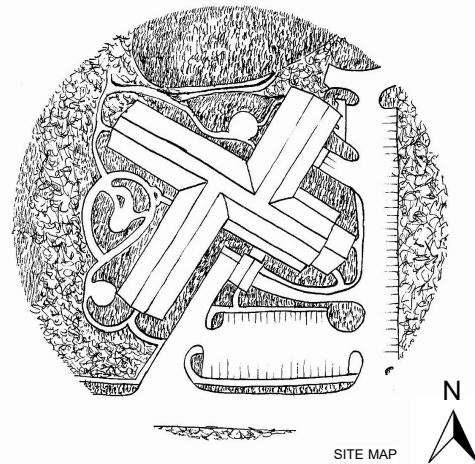
Project Description

Beyond the Pages Independent Living Facility is a 3-Story, 75,000 square foot building. The renovation will comprise of 18,000 square feet of the first floor including many amenities for the seniors and the community. This DD set details out the 700 square foot community kitchen.

| Sheet List | |
|--------------|----------------------------------|
| Sheet Number | Sheet Name |
| A-101 | Community Kitchen Floor Plan |
| A-102 | Community Kitchen RCP |
| G-001 | Coversheet/General Notes |
| I-103 | Community Kitchen Finish Plan |
| I-104 | Community Kitchen Furniture Plan |
| I-105 | Community Kitchen Elevations |
| I-106 | Community Kitchen Millwork |

Symbols

| | |
|--|-----------------------|
| | North Arrow |
| | Room Tag |
| | Callout Head |
| | Elevation Mark |
| | Section Head |
| | Level Head |
| | ADA Clear Floor Space |
| | ADA Turn Circles |



Project Start Date: 08/11/18

Project End Date: 03/14/19

SIGN

SEAL

| No. | Issued by | Description | Date |
|-----|-----------|-------------|------|
| | | | |
| | | | |
| | | | |
| | | | |
| | | | |
| | | | |
| | | | |
| | | | |
| | | | |
| | | | |

G-001

Coversheet/General Notes

| | |
|----------------|--------------|
| Project number | 005 |
| Date | 4/12/19 |
| Drawn by | AV |
| Checked by | CG |
| Scale | As indicated |

3/9/2019 5:57:15 PM

Beyond the Pages

2026 Womack Road
 Dunwoody, GA 30338

Project Start Date: 08/11/18

Project End Date: 03/14/19

SIGN

SEAL

| No. | Issued by | Description | Date |
|-----|-----------|-------------|------|
| | | | |
| | | | |
| | | | |
| | | | |
| | | | |
| | | | |
| | | | |
| | | | |
| | | | |
| | | | |

A-101

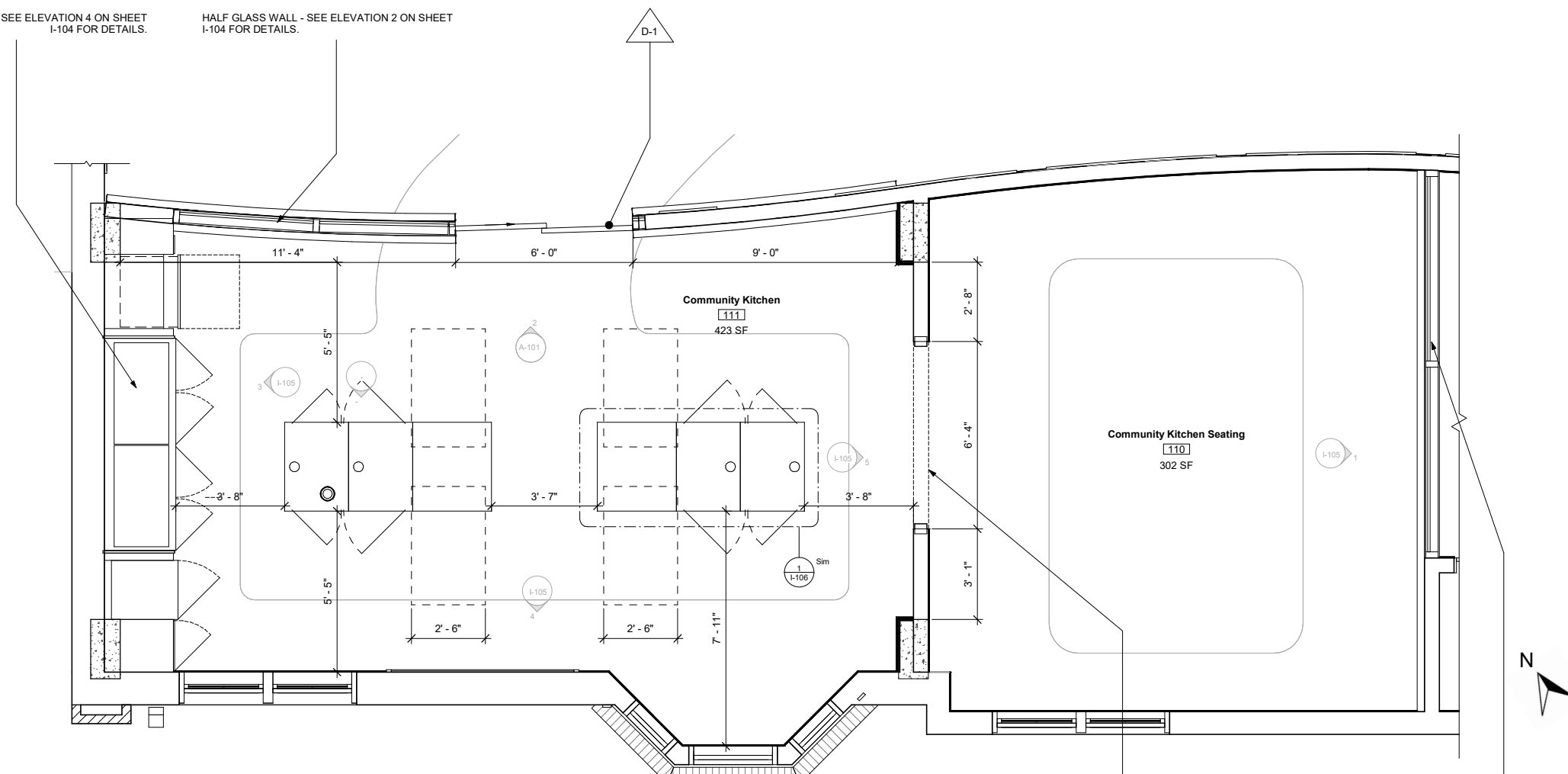
Community Kitchen Floor Plan

| | |
|----------------|--------------|
| Project number | 005 |
| Date | 4/12/19 |
| Drawn by | Author |
| Checked by | CG |
| Scale | 1/2" = 1'-0" |

3/9/2019 5:57:01 PM

CUSTOM WET WALL - SEE ELEVATION 4 ON SHEET I-104 FOR DETAILS.

HALF GLASS WALL - SEE ELEVATION 2 ON SHEET I-104 FOR DETAILS.

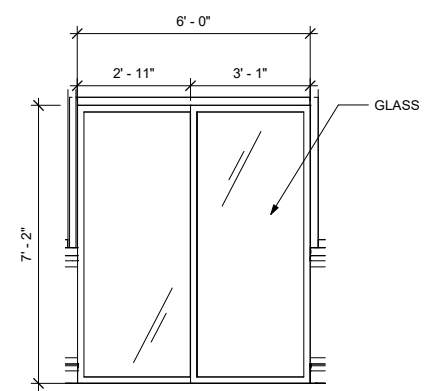


CASED OPENING - SEE ELEVATION 3 ON SHEET I-104 FOR DETAILS.

HALF GLASS WALL - SEE ELEVATION 1 ON SHEET I-104 FOR DETAILS.

① Community Kitchen Floor Plan
1/2" = 1'-0"

| DOOR SCHEDULE | | | | | | | |
|---------------|-----------|-------|--------|-----------|----------|------------|----------|
| DOOR | DOOR TYPE | DOOR | | | | DOOR FRAME | HARDWARE |
| | | WIDTH | HEIGHT | THICKNESS | MATERIAL | MATERIAL | MATERIAL |
| 1 | A | 6' 0" | 7' 2" | 2" | GLASS | METAL | METAL |



② Door Type A
1/2" = 1'-0"

Beyond the Pages

2026 Womack Road
Dunwoody, GA 30338

Project Start Date: 08/11/18

Project End Date: 03/14/19

SIGN

SEAL

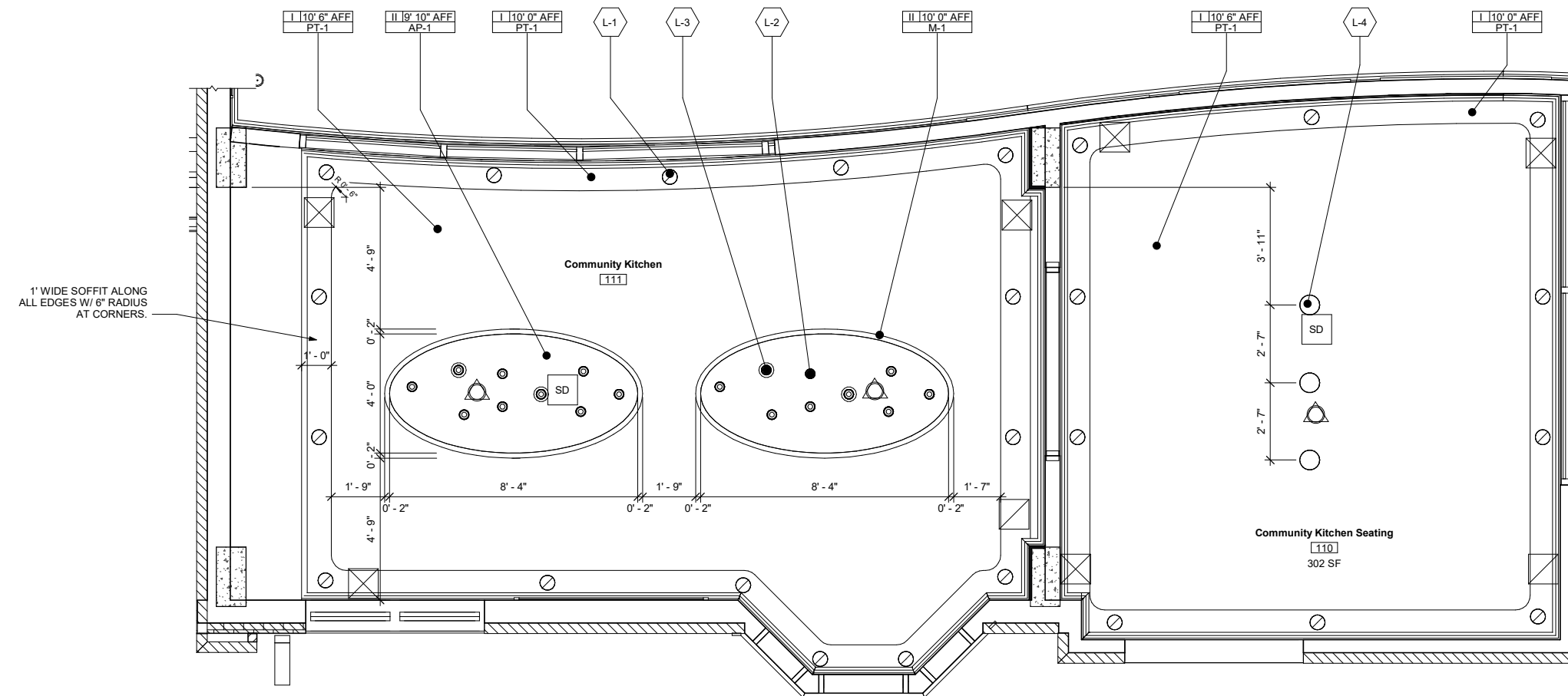
| No. | Issued by | Description | Date |
|-----|-----------|-------------|------|
| | | | |
| | | | |
| | | | |
| | | | |
| | | | |
| | | | |
| | | | |
| | | | |
| | | | |
| | | | |

A-102

Community Kitchen
RCP

| | |
|----------------|--------------|
| Project number | 005 |
| Date | 4/12/19 |
| Drawn by | AV |
| Checked by | CG |
| Scale | 1/2" = 1'-0" |

3/9/2019 5:57:01 PM



1" WIDE SOFFIT ALONG ALL EDGES W/ 6" RADIUS AT CORNERS.

1 Community Kitchen RCP
1/2" = 1'-0"

LIGHTING SCHEDULE

| TAG | SYMBOL | QTY | ITEM | MANUFACTURER | TYPE | LUMENS | CRI | COMMENTS |
|-----|--------|-----|----------------------|------------------|------|--------|-----|------------|
| L-1 | ⊙ | 25 | 6" DOWNLIGHT DN135B | PHILIPS LIGHTING | LED | 1000 | 80 | OPAL COVER |
| L-2 | ⊙ | 9 | PIPES TUBE S - 450MM | INTRA LIGHTING | LED | 150 | N/A | |
| L-3 | ⊙ | 9 | PIPES TUBE S - 750MM | INTRA LIGHTING | LED | 150 | N/A | |
| L-4 | ○ | 3 | MONAD MINI PENDANT | KUZCO LIGHTING | LED | 320 | 80 | OPAL GLASS |

SYMBOLS LEGEND

| SYMBOL | OBJECT |
|--------|-------------------|
| ⊙ | SPRINKLER HEAD |
| ⊗ | SUPPLY DIFFUSER |
| ⊘ | RETURN AIR GRILLE |
| SD | SMOKE DETECTOR |

CEILING TYPE SCHEDULE

| TYPE NAME | TYPE INFORMATION |
|-----------|------------------|
| I | PAINTED GYPSUM |
| II | ACOUSTIC METAL |

FINISH SCHEDULE

| TAG | MATERIAL INFORMATION |
|------|--|
| PT-1 | MANUFACTURER: SHERWIN WILLIAMS STYLE: SW 6077 COLOR: EVERYDAY WHITE |
| AC-1 | MANUFACTURER: ARMSTRONG STYLE: METALWORKS VECTOR COLOR: SILVER GREY |
| M-1 | MANUFACTURER: NATIONAL WALLCOVERING STYLE: SANFOOT COLOR: BEECH (STAINED BLUE) |

NOTES

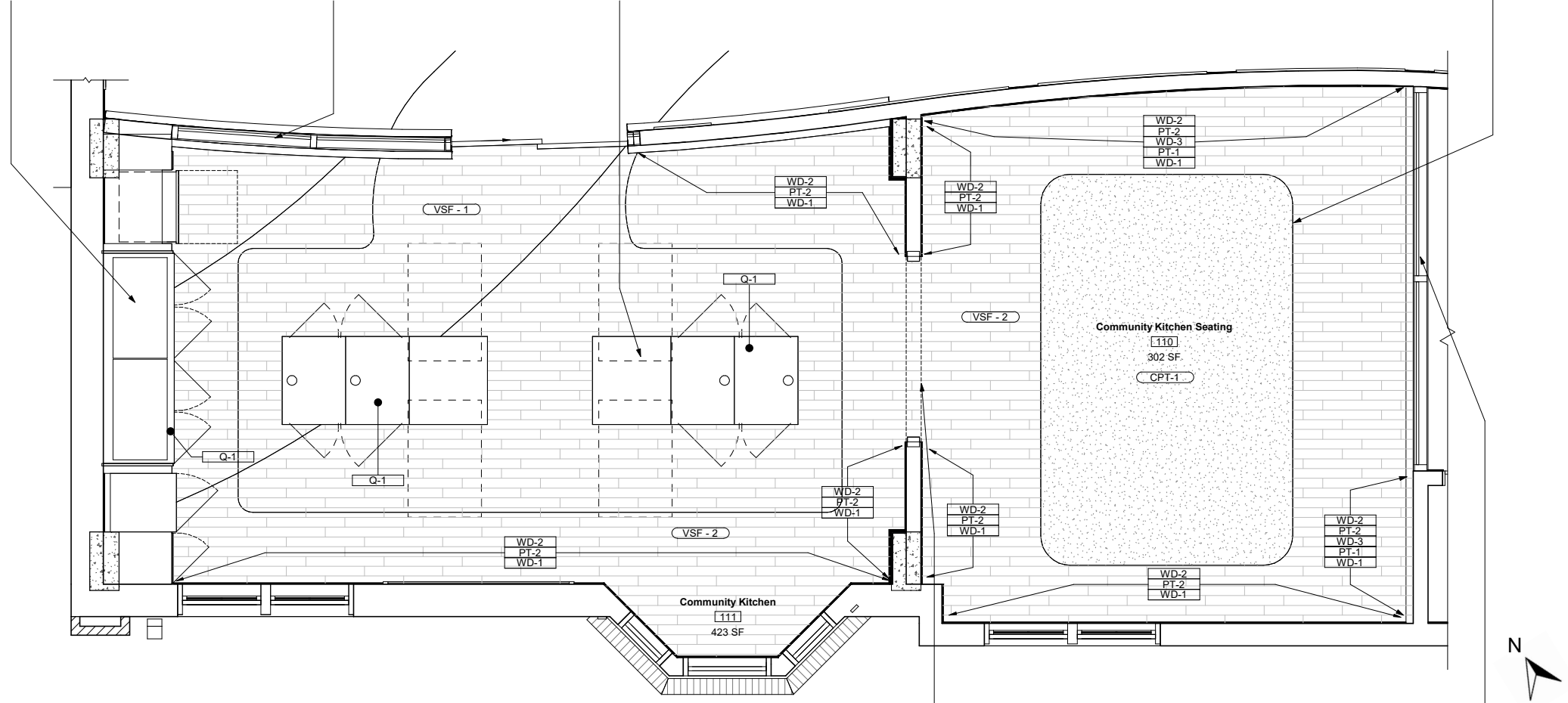
- HVAC SUPPLY AND RETURN DUCTS AND REGISTERS SHALL NOT BE BELOW LIGHT LINE AT 10' 6" AFF.
- LIGHTING FIXTURES SHALL BE INSTALLED COMPLETE WITH LAMOS, BALLASTS, AND ALL NECESSARY MOUNTING ACCESSORIES INCLUDING STRAIGHTENING CLIPS.

CUSTOM WET WALL - SEE ELEVATION 4 ON SHEET I-104 FOR FINISH DETAILS.

HALF GLASS WALL - SEE ELEVATION 2 ON SHEET I-104 FOR FINISH DETAILS.

CUSTOM MULTI-HEIGHT ISLAND - SEE SHEET I-106 FOR FINISH DETAILS.

FLOORING CHANGE



1 Community Kitchen Finish Plan
1/2" = 1'-0"

CASED OPENING - SEE ELEVATION 3 ON SHEET I-104 FINISH DETAILS.

HALF GLASS WALL - SEE ELEVATION 1 ON SHEET I-104 FOR FINISH DETAILS.

| TAG | MATERIAL INFORMATION |
|-------|---|
| VSF-1 | MANUFACTURER: SHAW FLOORS STYLE: SA564 BELLEVIEW COLOR: 00299 CHARDONNAY |
| VSF-2 | MANUFACTURER: SHAW FLOORS STYLE: SA565 HIGH ROAD COLOR: 00302 CRISP LINEN |
| CPT-1 | MANUFACTURER: J&J STYLE: APERTURE COLOR: COOL GREY |
| PT-1 | MANUFACTURER: SHERWIN WILLIAMS STYLE: SW6077 COLOR: EVERYDAY WHITE |
| PT-2 | MANUFACTURER: SHERWIN WILLIAMS STYLE: SW0050 COLOR: CLASSIC LIGHT BUFF |
| Q-1 | MANUFACTURER: WILSONART STYLE: QUARTZ COLOR: SALAR |

| TAG | MOLDING INFORMATION | PROFILE |
|------|--|---------|
| WD-1 | MANUFACTURER: RANDALL BROTHERS STYLE: 6" BASEBOARD PROFILE NAME: RB-9601 | |
| WD-2 | MANUFACTURER: RANDALL BROTHERS STYLE: 4" CROWN MOLDING PROFILE NAME: RB-9875 | |
| WD-3 | MANUFACTURER: RANDALL BROTHERS STYLE: 4" CHAIR RAIL PROFILE NAME: RB-9853 | |

NOTES
SEE ELEVATIONS ON SHEET I-104 FOR SPECIFICS ON WALL FINISHES.



952.693.6525
516 Drayton St.
Savannah, GA 31401

Beyond the Pages

2026 Womack Road
Dunwoody, GA 30338

Project Start Date: 08/11/18

Project End Date: 03/14/19

SIGN

SEAL

| No. | Issued by | Description | Date |
|-----|-----------|-------------|------|
| | | | |
| | | | |
| | | | |
| | | | |
| | | | |
| | | | |
| | | | |
| | | | |
| | | | |
| | | | |

I-103

**Community Kitchen
Finish Plan**

Project number 005
Date 4/12/19
Drawn by AV
Checked by CG
Scale 1/2" = 1'-0"

3/9/2019 5:57:28 PM

Beyond the Pages

2026 Womack Road
Dunwoody, GA 30338

Project Start Date: 08/11/18

Project End Date: 03/14/19

SIGN

SEAL

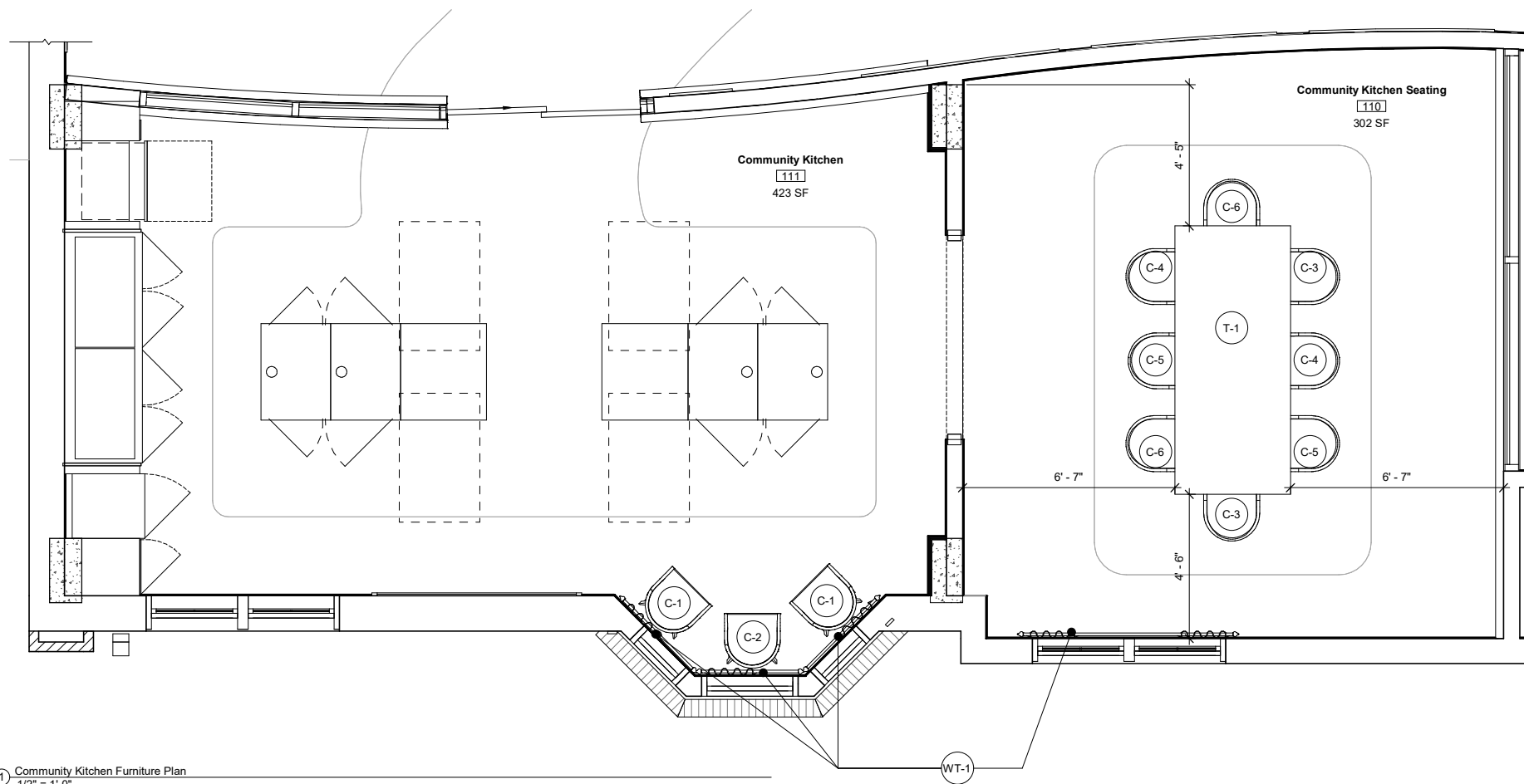
| No. | Issued by | Description | Date |
|-----|-----------|-------------|------|
| | | | |
| | | | |
| | | | |
| | | | |
| | | | |
| | | | |
| | | | |
| | | | |

I-104

Community Kitchen Furniture Plan

| | |
|----------------|--------------|
| Project number | 005 |
| Date | 4/12/19 |
| Drawn by | AV |
| Checked by | CG |
| Scale | 1/2" = 1'-0" |

3/9/2019 5:57:28 PM



1 Community Kitchen Furniture Plan
1/2" = 1'-0"

FFE SCHEDULE

| TAG | QTY | ITEM | MANUFACTURER | FINISH | COMMENTS |
|------|-----|------------------------|--------------|-------------|--|
| C-1 | 2 | GERMAINE | KELLEX | LIGHT OAK | UPHOLSTERED W/BURCH ESPIRIT PINK |
| C-2 | 1 | GERMAINE | KELLEX | LIGHT OAK | UPHOLSTERED W/BRENTANO EXA 13 |
| C-3 | 2 | RENATA | KELLEX | LIGHT OAK | UPHOLSTERED W/NOBILIS VELOURS MASSIMO 65 |
| C-4 | 2 | RENATA | KELLEX | LIGHT OAK | UPHOLSTERED W/POLLACK PIGMENT FLAMINGO |
| C-5 | 2 | RENATA | KELLEX | LIGHT OAK | UPHOLSTERED W/POLLACK GEOLOGY RIVER ROCK |
| C-6 | 2 | RENATA | KELLEX | LIGHT OAK | UPHOLSTERED W/BURCH ESPIRIT PINK |
| T-1 | 1 | BRODERICK DINING TABLE | PALECEK | SAND | ONE LEAF |
| WT-1 | 4 | FLUTED END CAP | KIRSCH | DARK WALNUT | 3" ROD - FABRIC: ROMO TALISA OLIVINE |

Beyond the Pages

2026 Womack Road
Dunwoody, GA 30338

Project Start Date: 08/11/18

Project End Date: 03/14/19

SIGN

SEAL

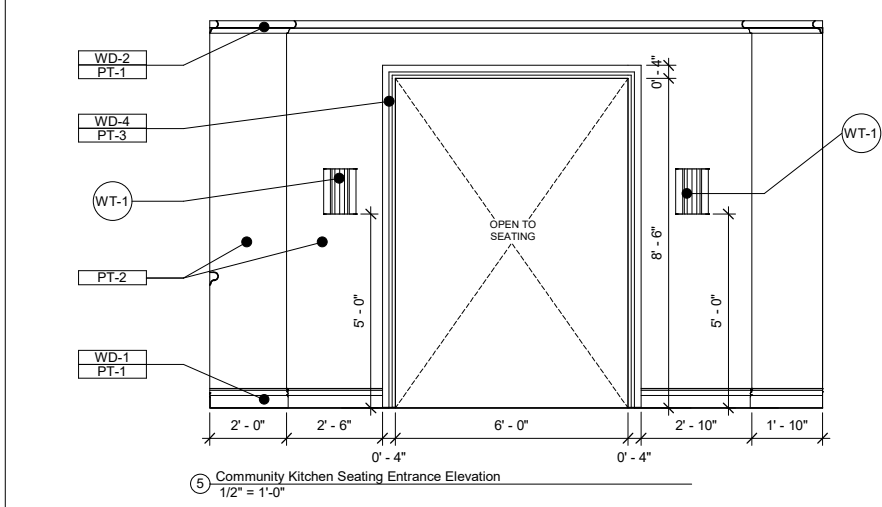
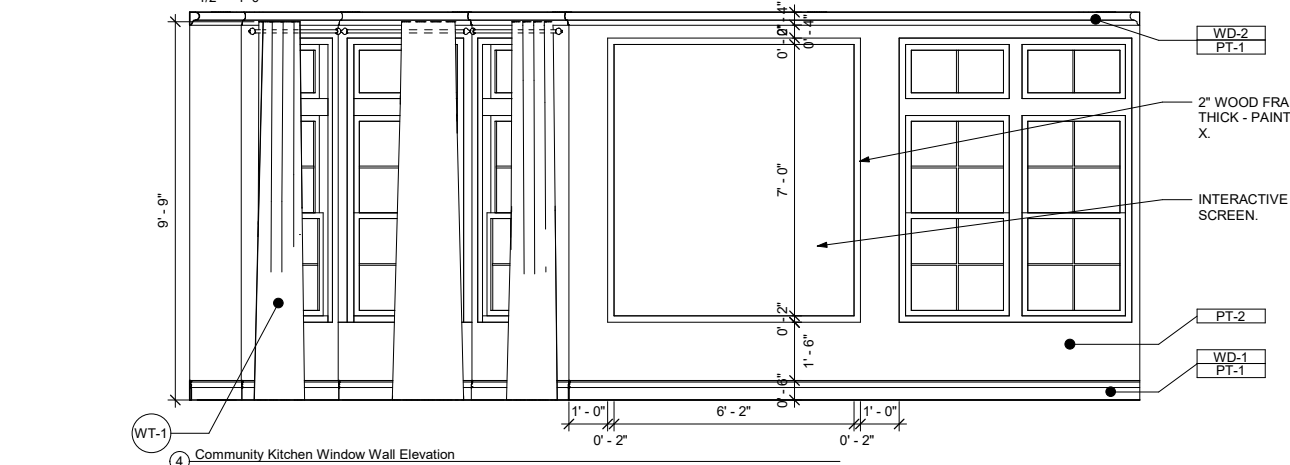
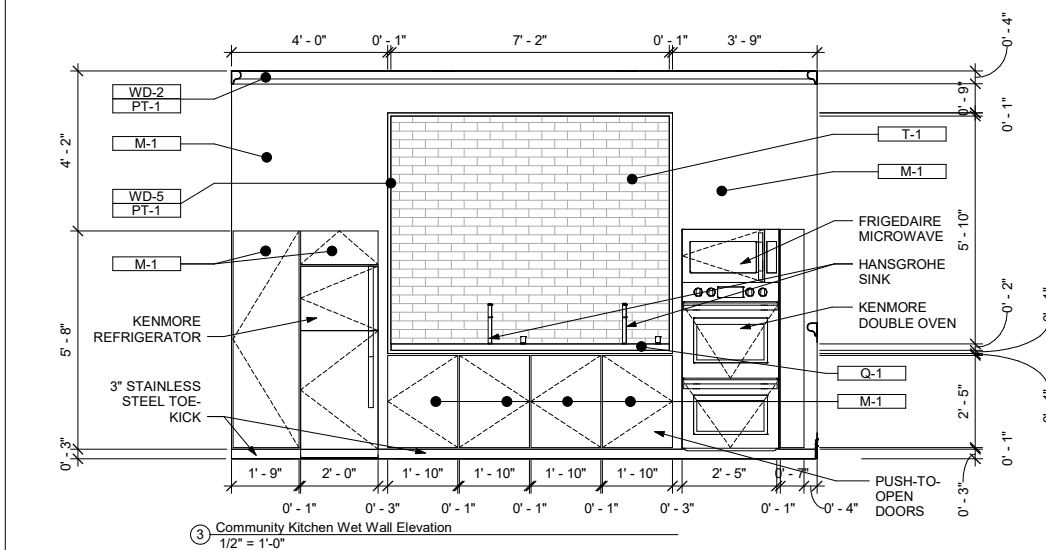
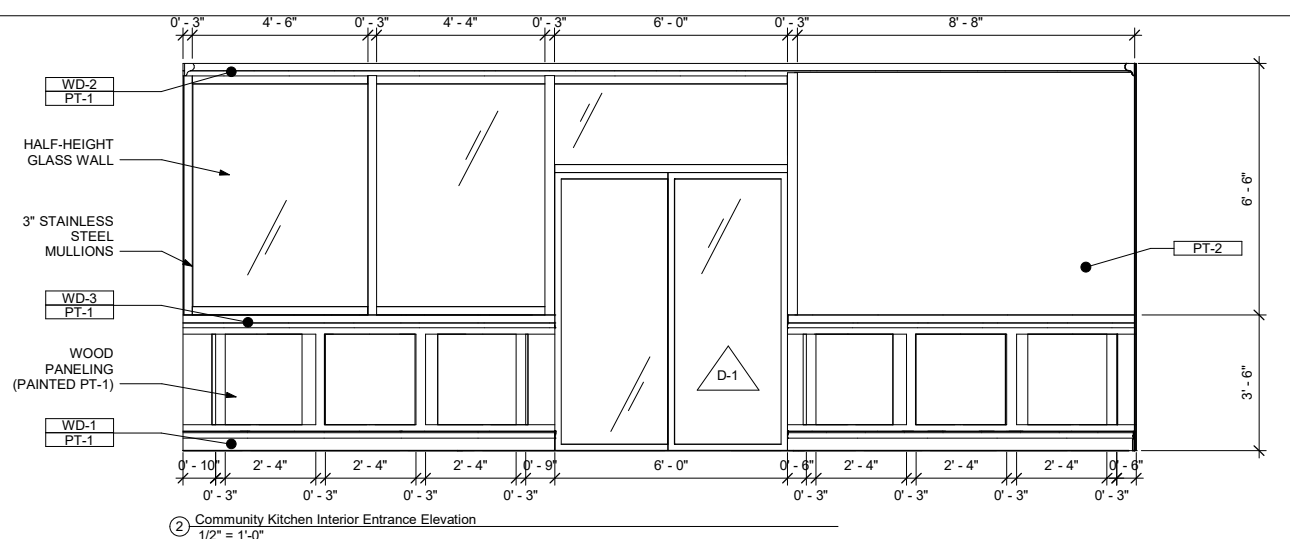
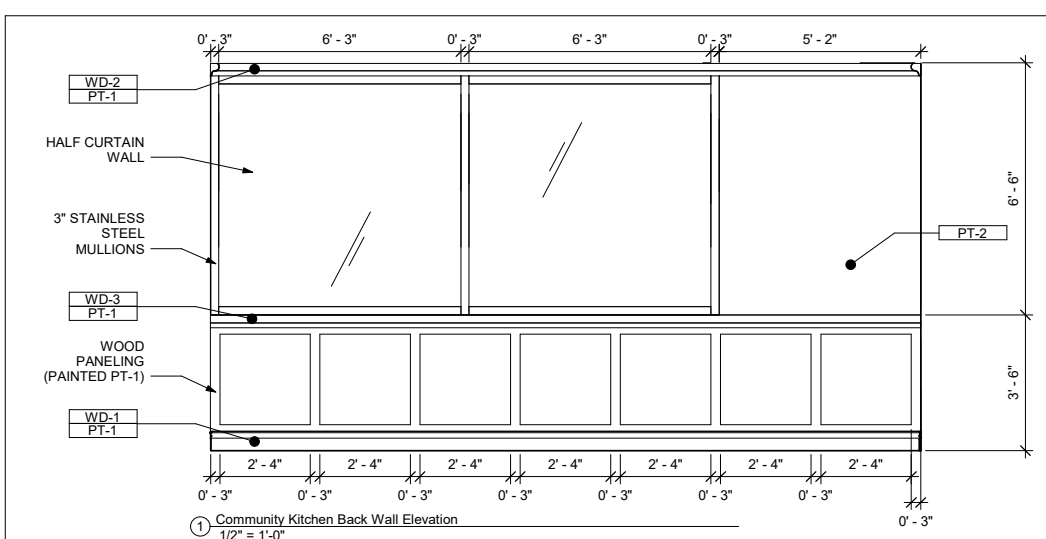
| No. | Issued by | Description | Date |
|-----|-----------|-------------|------|
| | | | |
| | | | |
| | | | |
| | | | |
| | | | |
| | | | |
| | | | |
| | | | |
| | | | |
| | | | |

I-105

Community Kitchen Elevations

| | |
|----------------|--------------|
| Project number | 005 |
| Date | 4/12/19 |
| Drawn by | AV |
| Checked by | CG |
| Scale | 1/2" = 1'-0" |

3/9/2019 5:57:30 PM

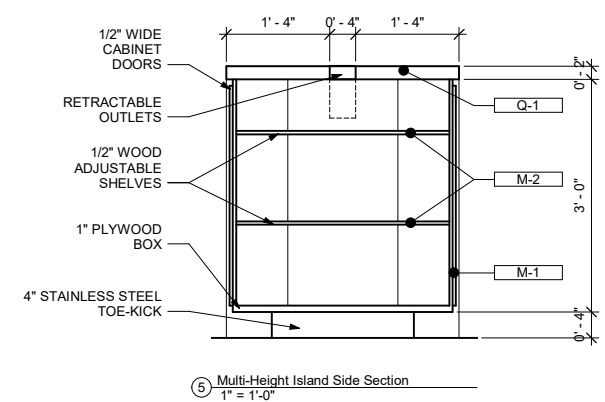
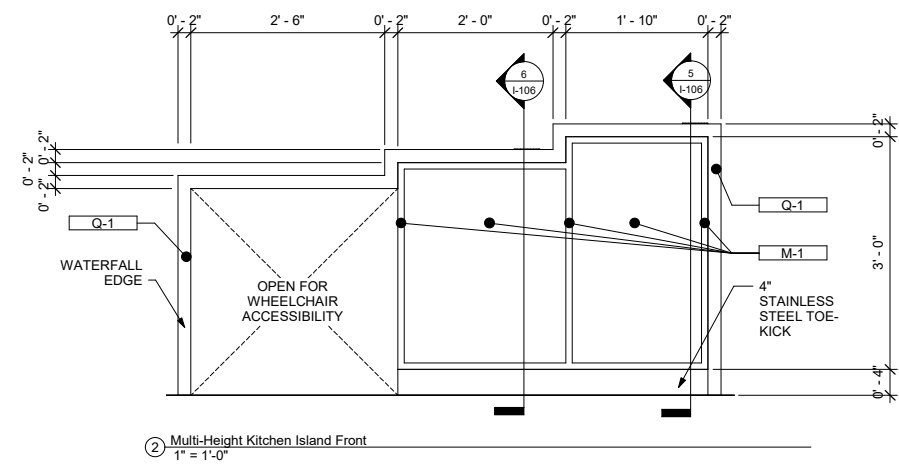
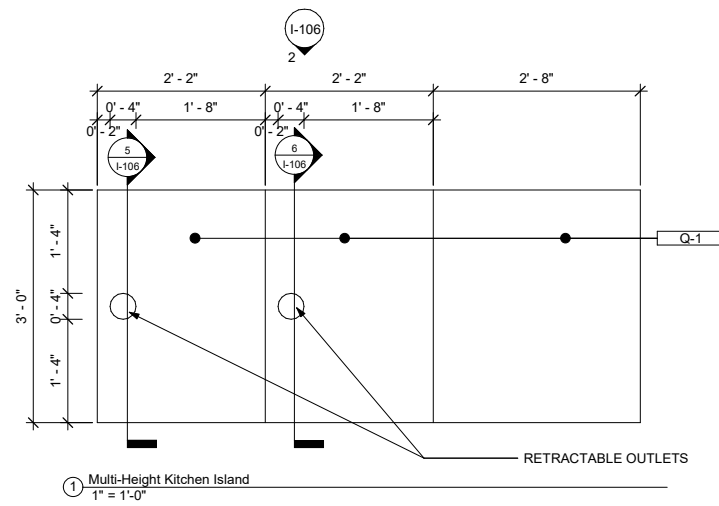


| TAG | MATERIAL INFORMATION |
|------|--|
| PT-1 | MANUFACTURER: SHERWIN WILLIAMS STYLE: SW6077 COLOR: EVERYDAY WHITE |
| PT-2 | MANUFACTURER: SHERWIN WILLIAMS STYLE: SW0050 COLOR: CLASSIC LIGHT BUFF |
| PT-3 | MANUFACTURER: SHERWIN WILLIAMS STYLE: SW7607 COLOR: SANTORINI BLUE |
| M-1 | MANUFACTURER: NATIONAL WALLCOVERING STYLE: SANFOOT COLOR: BEECH (STAINED BLUE) |
| Q-1 | MANUFACTURER: WILSONART STYLE: QUARTZ COLOR: SALAR |
| T-1 | MANUFACTURER: WALKER ZANGER STYLE: CAFE COLOR: WATER GLOSS |

| TAG | MOLDING INFORMATION | PROFILE |
|------|--|---------|
| WD-1 | MANUFACTURER: RANDALL BROTHERS STYLE: 6" BASEBOARD PROFILE NAME: RB-9601 | |
| WD-2 | MANUFACTURER: RANDALL BROTHERS STYLE: 4" CROWN MOLDING PROFILE NAME: RB-9875 | |
| WD-3 | MANUFACTURER: RANDALL BROTHERS STYLE: 4" CHAIR RAIL PROFILE NAME: RB-9853 | |
| WD-4 | MANUFACTURER: RANDALL BROTHERS STYLE: 4" CASING PROFILE NAME: RB-9823-3 | |
| WD-5 | MANUFACTURER: CUSTOM STYLE: 1" TRIM PROFILE NAME: CUSTOM | |

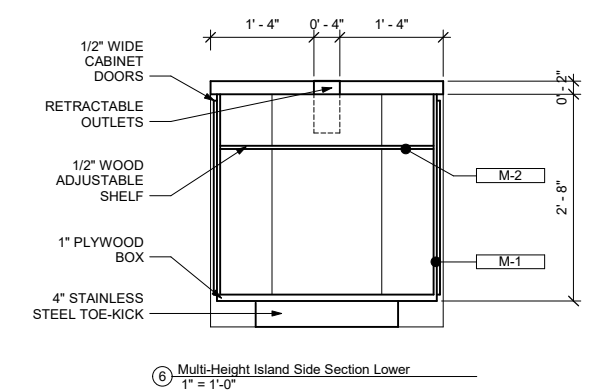
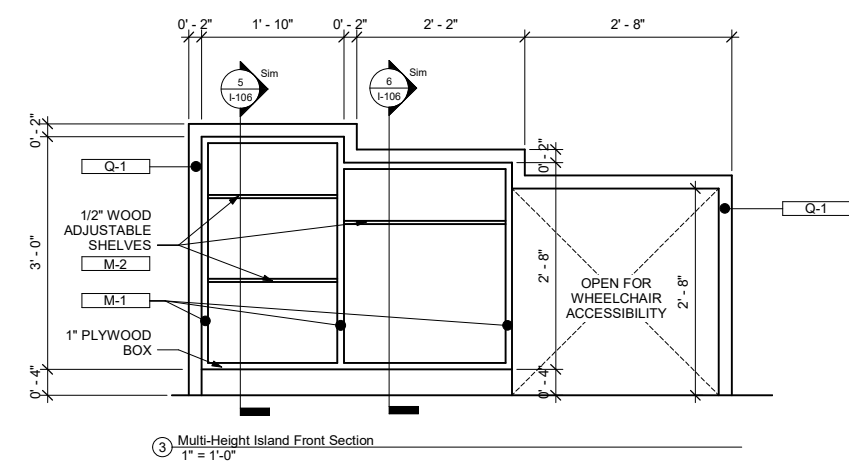
| TAG | QTY | ITEM | MANUFACTURER | FINISH | COMMENTS |
|------|-----|----------------|--------------|-------------|--------------------------------------|
| WT-1 | 4 | FLUTED END CAP | KIRSCH | DARK WALNUT | 3" ROD - FABRIC: ROMO TALISA OLIVINE |


| TAG | SYMBOL | QTY | ITEM | MANUFACTURER | TYPE | LUMENS | CRI | COMMENTS |
|-----|--------|-----|----------------|--------------|------|--------|-----|--------------------|
| L-5 | | 4 | LAYERED SCONCE | LIGHTART | LED | 6W | N/A | LINEN WHITE FINISH |



| TAG | MATERIAL INFORMATION |
|-----|--|
| Q-1 | MANUFACTURER: WILSONART STYLE: QUARTZ COLOR: SALAR |
| M-1 | MANUFACTURER: NATIONAL WALLCOVERING STYLE: SANFOOT COLOR: BEECH (STAINED BLUE) |
| M-2 | MANUFACTURER: NATIONAL WALLCOVERING STYLE: SANFOOT COLOR: BEECH |

NOTES
PUSH-TO-OPEN DOORS; NO HARDWARE.




Beyond the Pages
 2026 Womack Road
 Dunwoody, GA 30338

Project Start Date: 08/11/18
Project End Date: 03/14/19

SIGN
SEAL

| No. | Issued by | Description | Date |
|-----|-----------|-------------|------|
| | | | |
| | | | |
| | | | |
| | | | |
| | | | |
| | | | |
| | | | |
| | | | |

I-106

Community Kitchen Millwork

Project number: 005
Date: 4/12/19
Drawn by: AV
Checked by: CG
Scale: 1" = 1'-0"