

DOOR SCHEDULE										
NUMBER	HEIGHT	WIDTH	TYPE	DOOR		FRAME		DETAIL		COMMENTS
				MATERIAL	FINISH	MATERIAL	FINISH	SILL	FIRE RATING	
01.15.11	8'-0"	6'-0"	F	HM	P-1	FRM-00HM	HM	PT	B	KEYED ACCESS
01.20.11A	7'-0"	5'-10"	FG	--	--	FRM-00AL(CW)	--	--	--	EXISTING DOOR TO REMAIN
01.20.11B	7'-0"	5'-8 3/4"	FG	--	--	FRM-00AL(CW)	--	--	--	EXISTING DOOR TO REMAIN
01.20.13A	7'-0"	6'-0"	F	HM	P-3	FRM-00HM	HM	P-3	B	20 MIN. KEYED ACCESS, 180 DEGREE SWING
01.20.13B	7'-0"	3'-0"	F	HM	P-1	FRM-00HM	HM	P-1	B	20 MIN. KEYED ACCESS, CLOSER
01.20.13C	7'-0"	6'-0"	F	--	--	FRM-00HM	--	--	B	EXISTING DOOR TO REMAIN
01.20.15	7'-0"	3'-0"	F	HM	P-2	FRM-00HM	HM	P-2	B	KEYED ACCESS
01.20.16A	7'-0"	6'-0"	F	--	--	FRM-00HM	--	--	B	EXISTING DOOR TO REMAIN
01.20.16B	9'-0"	3'-0"	F	--	--	GL	FRM-00AL(CW)	--	D	METRO WALL SYSTEM
01.22.08	7'-0"	3'-0"	F	--	--	FRM-00HM	--	--	C	EXISTING DOOR TO REMAIN
01.22.09	7'-0"	3'-0"	F	HM	P-1	FRM-00HM	HM	P-1	C	LATCHSET ONLY
01.23.04A	7'-0"	3'-0"	F	HM	P-1	FRM-00HM	HM	P-1	D	KEYED ACCESS
01.23.04B	7'-0"	3'-0"	F	HM	P-1	FRM-00HM	HM	P-1	C	KEYED ACCESS
01.23.04C	7'-0"	3'-0"	F	HM	P-1	FRM-00HM	HM	P-1	C	KEYED ACCESS
01.23.04D	7'-0"	3'-0"	F	HM	P-1	FRM-00HM	HM	P-1	E	KEYED ACCESS
01.23.04E	8'-0"	3'-0"	F	HM	P-1	FRM-00HM	HM	P-1	D	20 MIN. CLOSER
01.23.04F	7'-0"	6'-0"	F	HM	P-1	FRM-00HM	HM	P-1	D	20 MIN. 180 DEGREE SWING

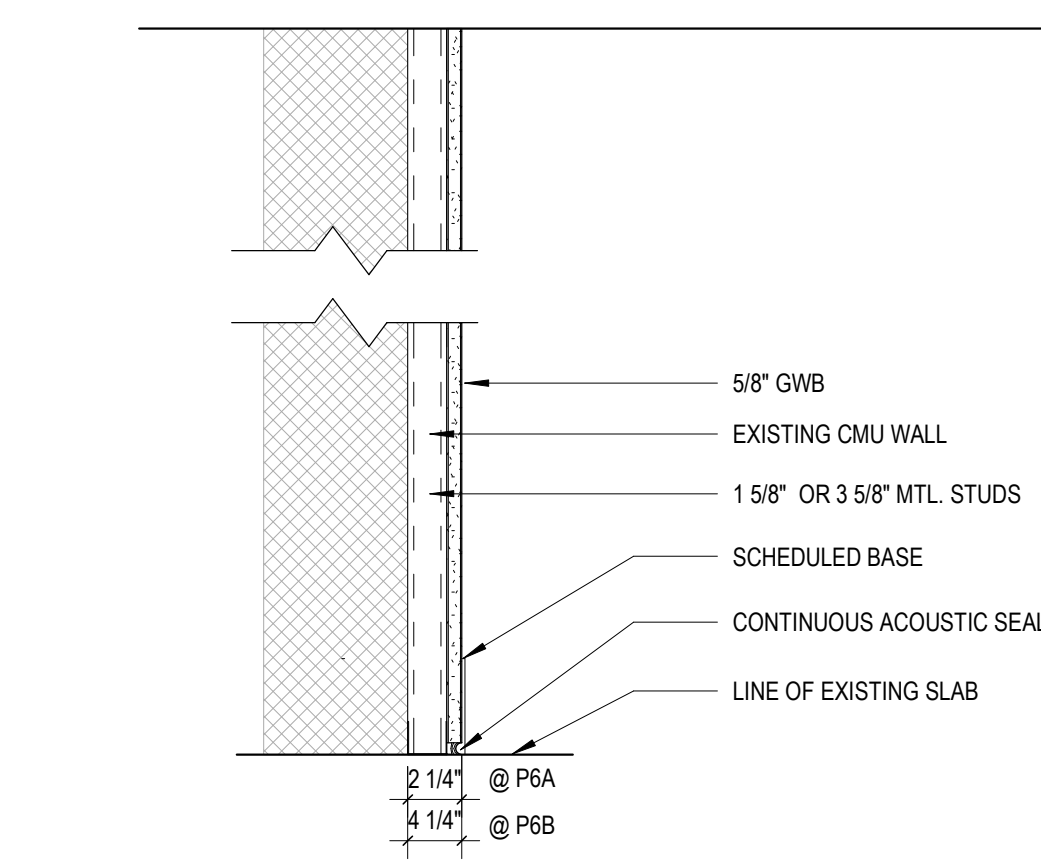
- P1A TO DECK GWB PARTITION - (1) LAYER 5/8" GWB EACH SIDE 3/58" MTL FRAME
- P1B TO DECK GWB PARTITION - (1) LAYER 5/8" GWB EACH SIDE 6" MTL FRAME
- P1C TO DECK GWB PARTITION - (1) LAYER 5/8" GWB EACH SIDE 6" MTL FRAME W/SOUND ATT. BLANKET

- P2A TO DECK FIRE RATED GWB PARTITION - (1) LAYER 5/8" TYPE X GWB EACH SIDE 3/58" MTL FRAME
- P2B TO DECK FIRE RATED GWB PARTITION - (1) LAYER 5/8" TYPE X GWB EACH SIDE 6" MTL FRAME

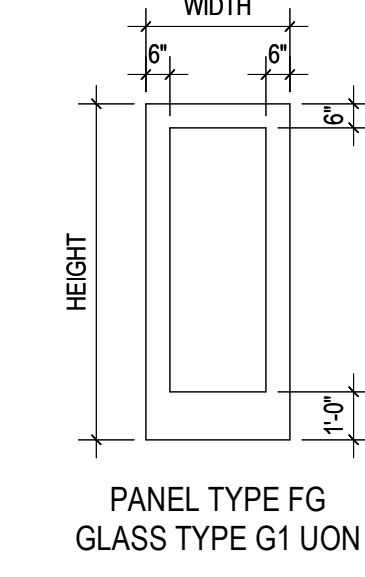
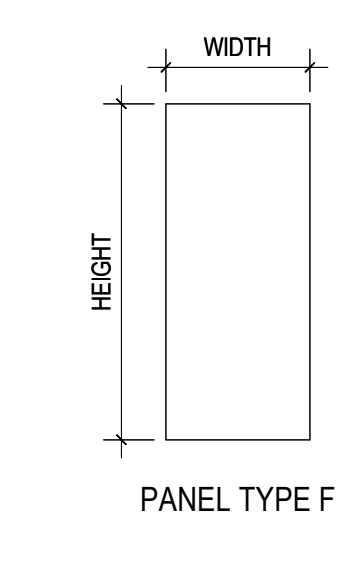
- P3 GWB PARTITION TO CEILING - (1) LAYER 5/8" GWB EACH SIDE 3/58" MTL FRAME W/SOUND ATT. BLANKET

- P4 GWB PARTITION TO CEILING - (1) LAYER 5/8" GWB ONE SIDE 3/58" MTL FRAME

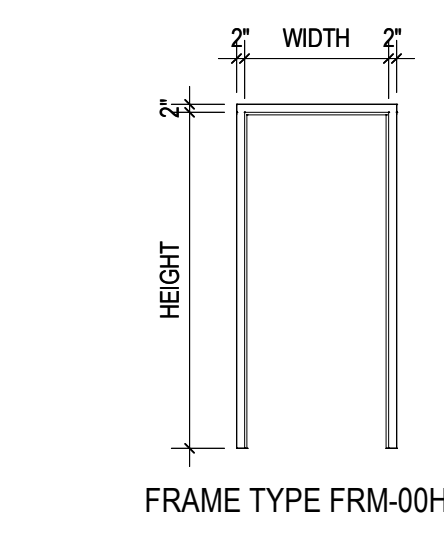
- P5 TO DECK GWB PARTITION - (1) LAYER 5/8" GWB ONE SIDE 3/58" MTL FRAME



- P6A TO DECK GWB FURRING PARTITION - (1) LAYER 5/8" GWB ONE SIDE 1 5/8" MTL FRAME
- P6B TO DECK GWB FURRING PARTITION - (1) LAYER 5/8" GWB ONE SIDE 3/58" MTL FRAME



DOOR PANEL LEGEND

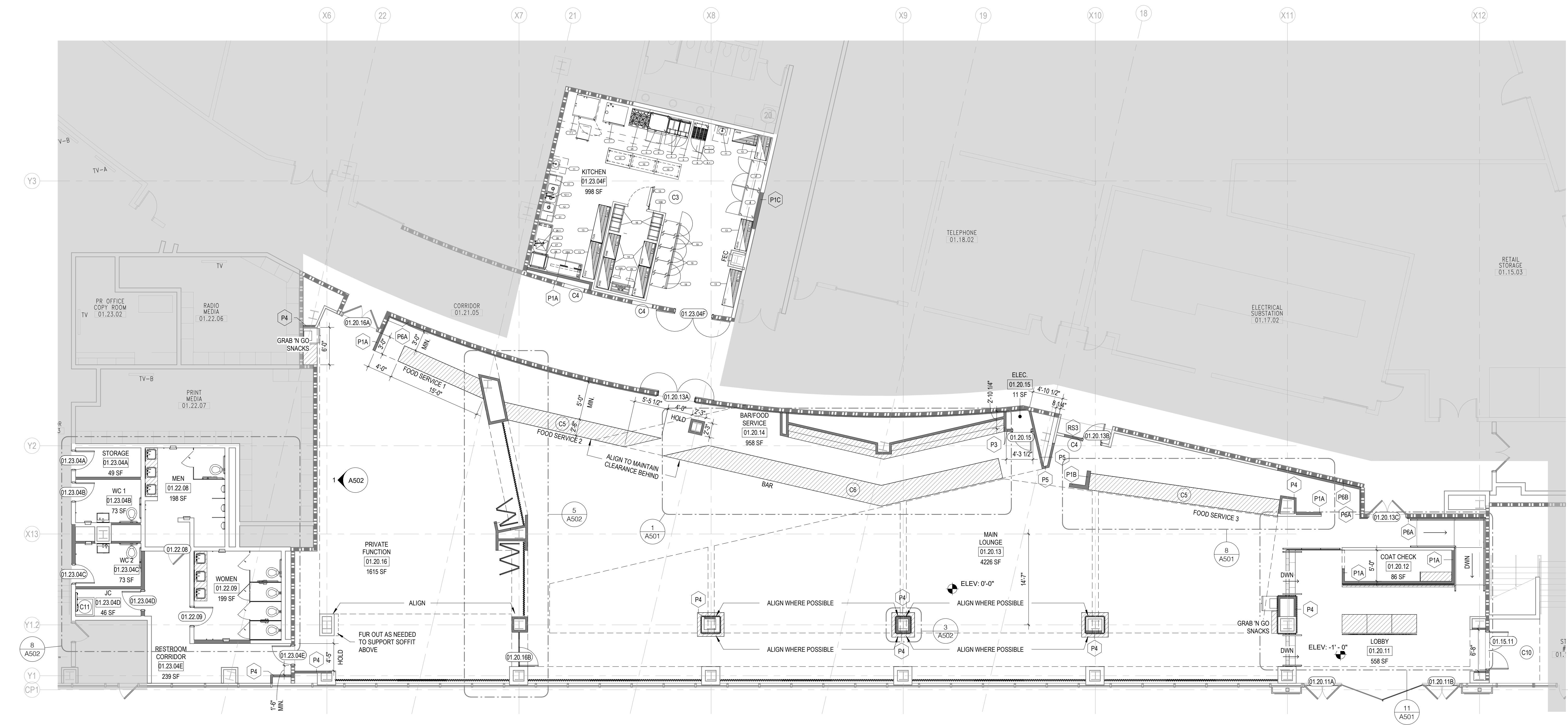


DOOR FRAME LEGEND

- HM HOLLOW METAL - SHOP PRIMED FOR PAINTING IN FIELD
- WD SOLID CORE WOOD DOOR
- GL 3/8" THICK CLEAR TEMPERED GLASS
- P-X PRIMED AND PAINTED, REF. FINISH SCHEDULE FOR COLOR, FINISH TO BE SEMI-GLOSS.
- EX EXISTING

DOOR FINISH LEGEND

PARTITION TYPES



- GENERAL CONSTRUCTION NOTES**
- ALL DIMENSIONS ARE INDICATED FROM FINISH FACE OF WALL U.N.O.
 - PROVIDE 4" CRITICAL DIMENSIONS BETWEEN ALL DOOR OPENINGS AND WALLS AT HINGE SIDE, U.N.O., TYP.
 - ANY PLYWOOD USED IN CONSTRUCTION TO BE FRT PLYWOOD
 - IF CONTRACTOR DETERMINES THAT IT WILL BE LESS EXPENSIVE TO DEMOLISH PARTIAL EXISTING WALLS NOW SHOWN TO REMAIN THAT WILL BECOME PART OF NEW GWB PARTITIONS, THEY ARE TO PROCEED WITH DEMOLISHING AND RECONSTRUCTION OF NEW IN ITS PLACE.
 - ANY DAMAGE CAUSED BY PREVIOUS DEMO AND FINISH REMOVAL TO BE PATCHED AND REPAIRED TO RECEIVE NEW FINISHES.
 - CONTRACTOR RESPONSIBLE FOR CLEANING ALL EXISTING SPACES ENSURING SPACE IS READY FOR OCCUPANCY
 - GC RESPONSIBLE FOR ALL CODE COMPLIANCE SIGNAGE
 - G.C. IS TO INCLUDE THE PREP OF ALL SURFACES AS REQUIRED TO MEET FACTORY ESTABLISHED STANDARDS TO RECEIVE NEW FINISH.
 - CONTRACTOR SHALL COORDINATE ALL TRADE REQUIREMENTS AND REPORT CONFLICTS IMMEDIATELY IF FOUND.
 - ALL SURFACES SHALL BE PROPERLY PREPARED TO RECEIVE NEW FINISH MATERIAL AS SCHEDULED OR OTHERWISE CALLED FOR ON THE PLANS.
 - ALL PARTITIONS TO BE TYPE P1 U.N.O.
 - REFER TO SHEET A901 FOR FINISHES, LOCATIONS AND DETAILS, INCLUDING PAINT COLORS.
 - PROVIDE MINIMUM 1/8" CLEAR DIMENSION BETWEEN ALL DOOR OPENINGS AND ANY OBSTRUCTION AT PULL SIDE.
 - CONTRACTOR SHALL PROVIDE FIRE RATED BLOCKING IN WALL WHERE REQUIRED.
 - CONTRACTOR SHALL VERIFY AND CONFIRM PROPER METAL STUD GAUGE AND SPACING AND REPORT CONFLICTS TO ARCHITECT IMMEDIATELY IF FOUND.

- CONSTRUCTION PLAN LEGEND**
- AREA NOT IN SCOPE OF WORK
 - MILLWORK
 - EXISTING PARTITION
 - NEW PARTITION
 - DOOR TAG
 - P1 PARTITION TAG
 - C2 CONSTRUCTION PLAN KEY NOTE
 - FEC SEMI-RECESSED FIRE EXTINGUISHER CABINET
 - EXISTING 1 HR RATED WALL

CONSTRUCTION PLAN KEY NOTES	
KEY	NOTE
C3	KITCHEN EQUIPMENT. REF F&B AND MEP DWGS FOR MORE DETAIL.
C4	INFILL EXISTING WALL TO MATCH AND MAINTAIN EXISTING 1 HOUR FIRE RATING.
C5	MILLWORK FOOD SERVICE COUNTER. REF F&B DWGS FOR EQUIP.
C6	MILLWORK BAR - 36" WIDE ADA SECTION TO BE PROVIDED. REF F&B DWGS FOR EQUIP.
C9	MOBILE MILLWORK FOOD SERVICE COUNTER. REF F&B DWGS FOR EQUIP.
C10	SELF-LEVELER TO BE APPLIED AS NEEDED TO ACHIEVE FLOORING TRANSITION.
C11	MOP SINK WITH STAINLESS STEEL WALL GUARD.

1 SERVICE LEVEL - CONSTRUCTION PLAN
1/8" = 1'-0"

THE RINKSIDE LOUNGE
PRUDENTIAL CENTER
147-191 MULBERRY STREET, NEWARK, NJ 07102

No	Date	Revision

KSS ARCHITECTS
Princeton | Philadelphia
337 Witherspoon Street
Princeton, NJ 08542
t: 609.921.1131

BD ENGINEERING
44 MAIN ST.
FARMINGDALE, NJ 07727
t: 732.886.5432

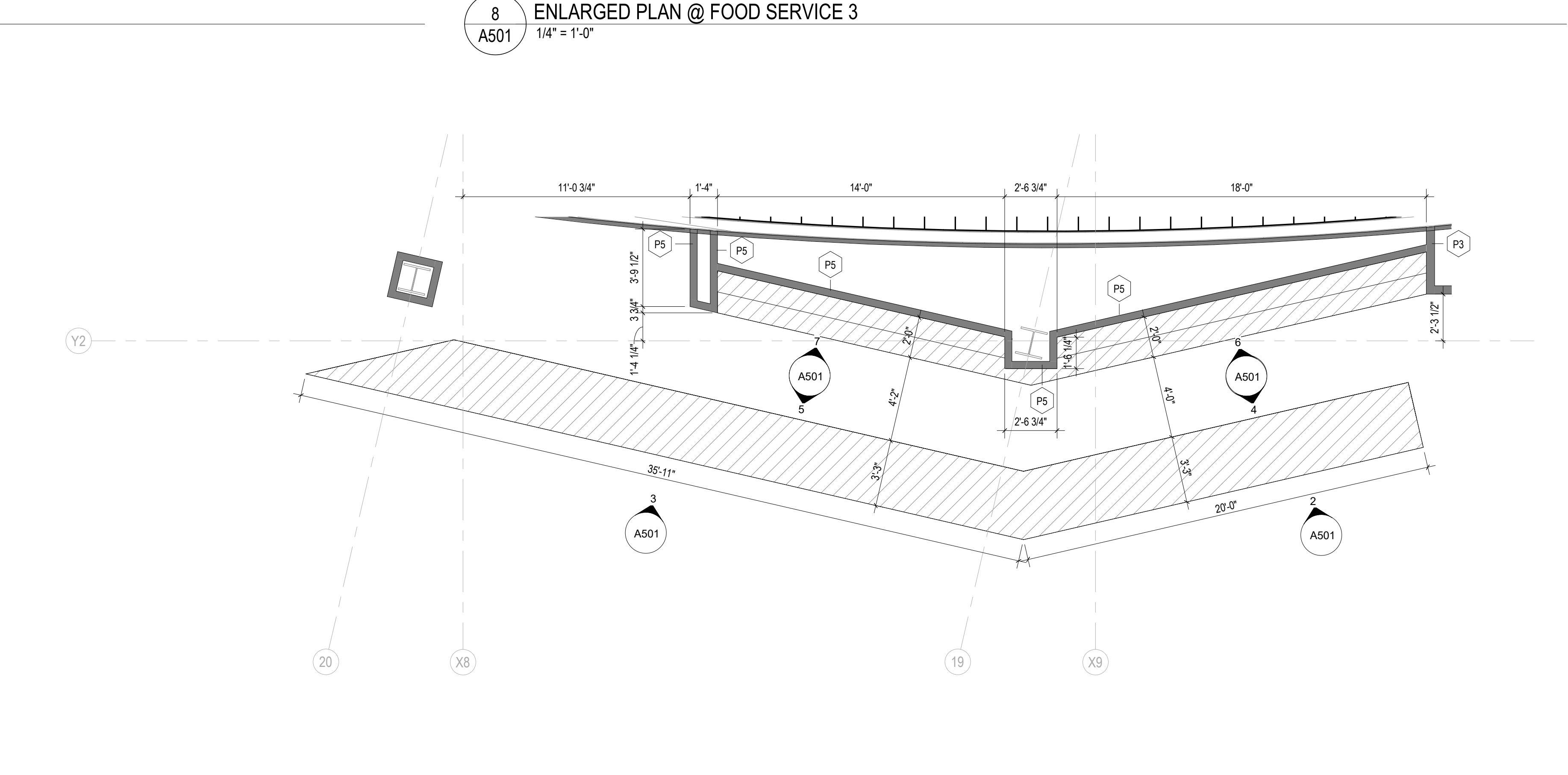
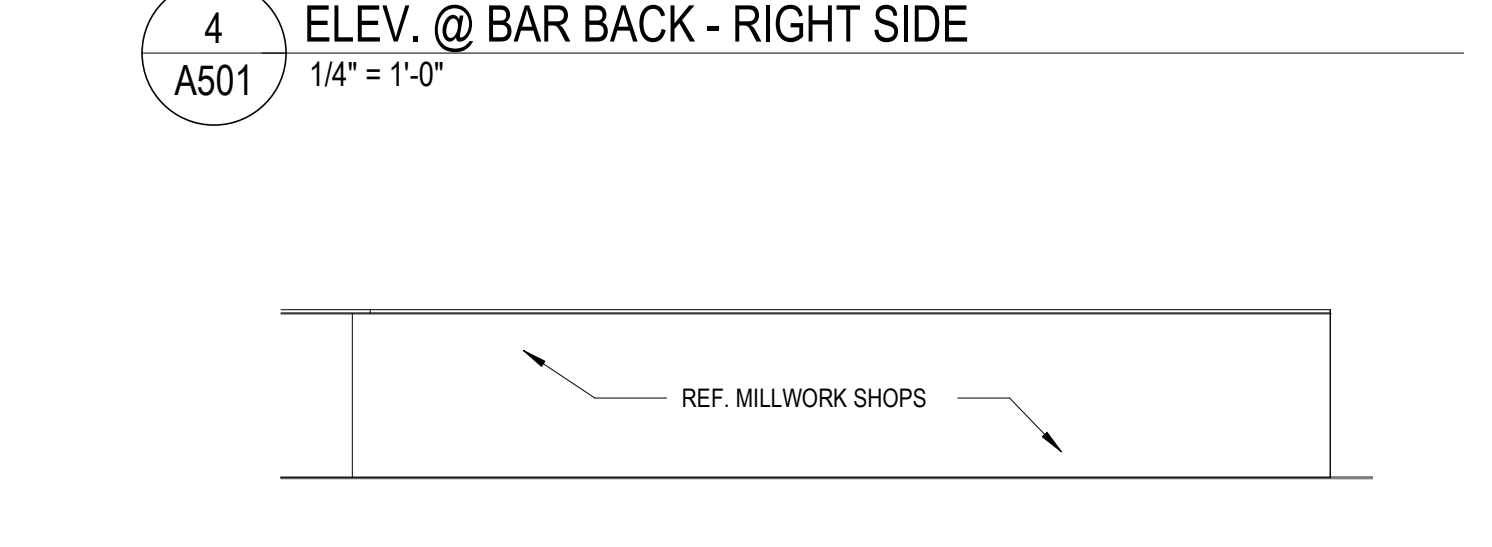
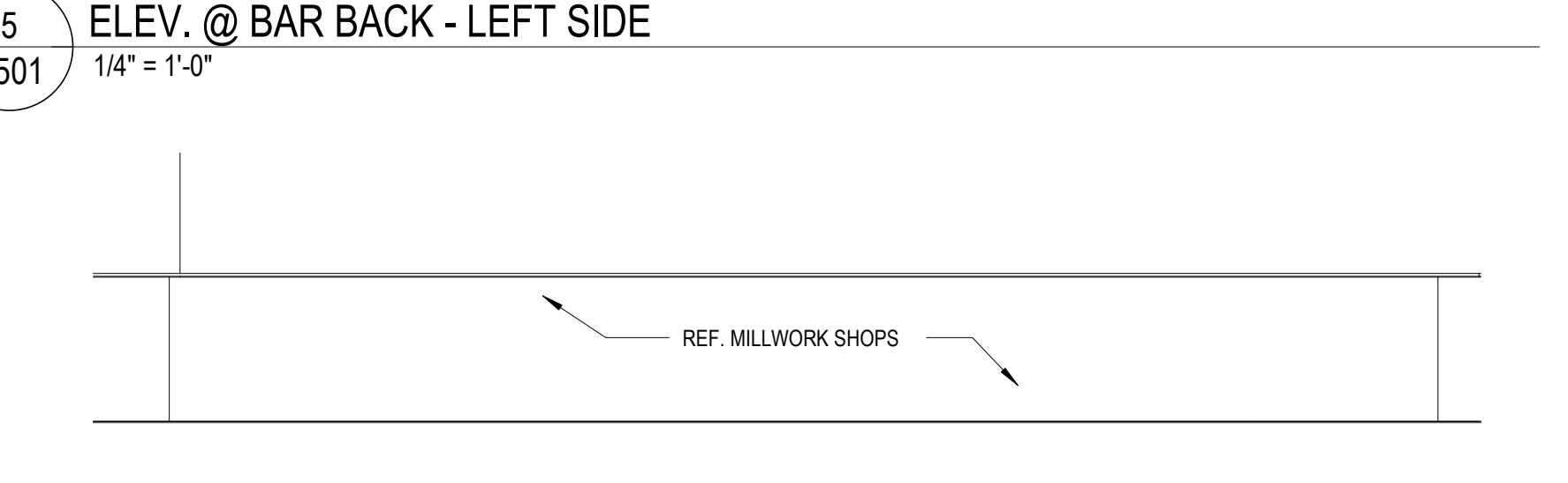
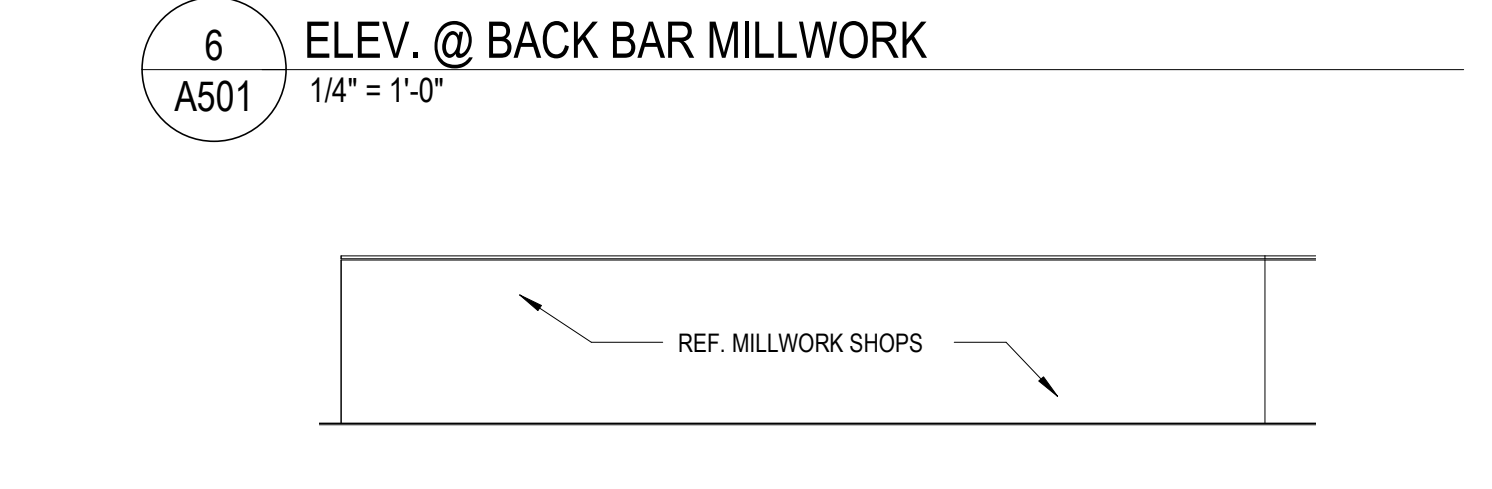
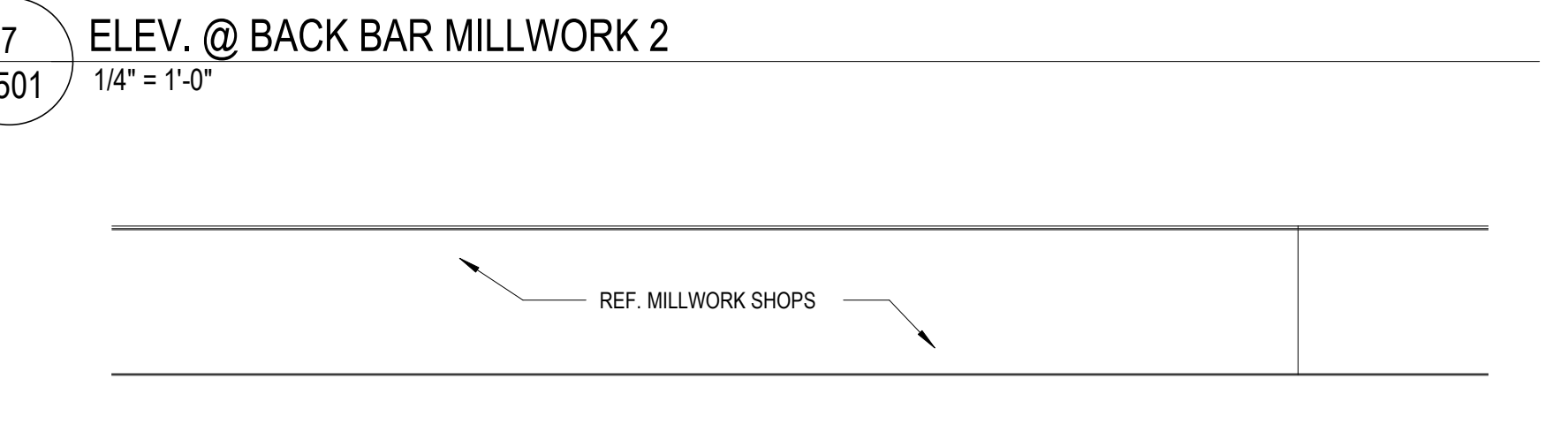
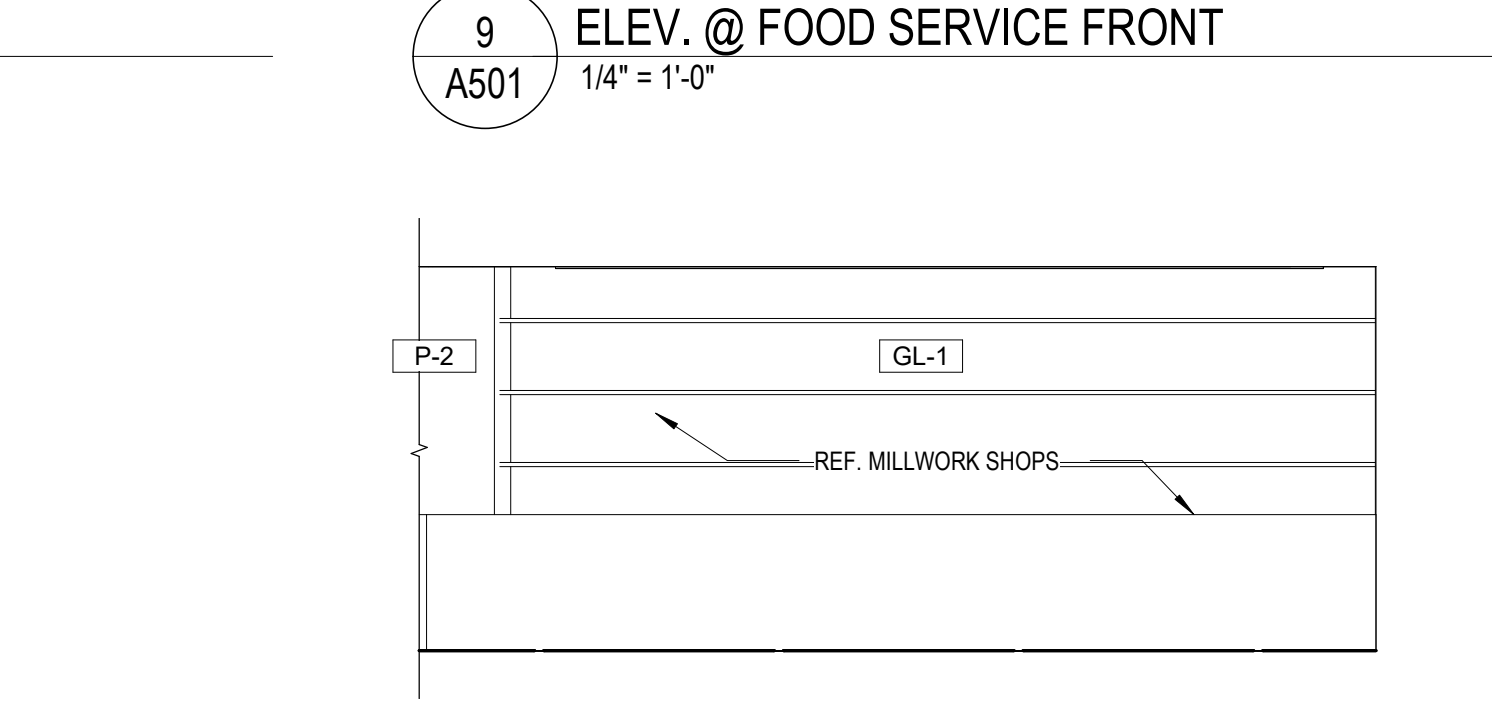
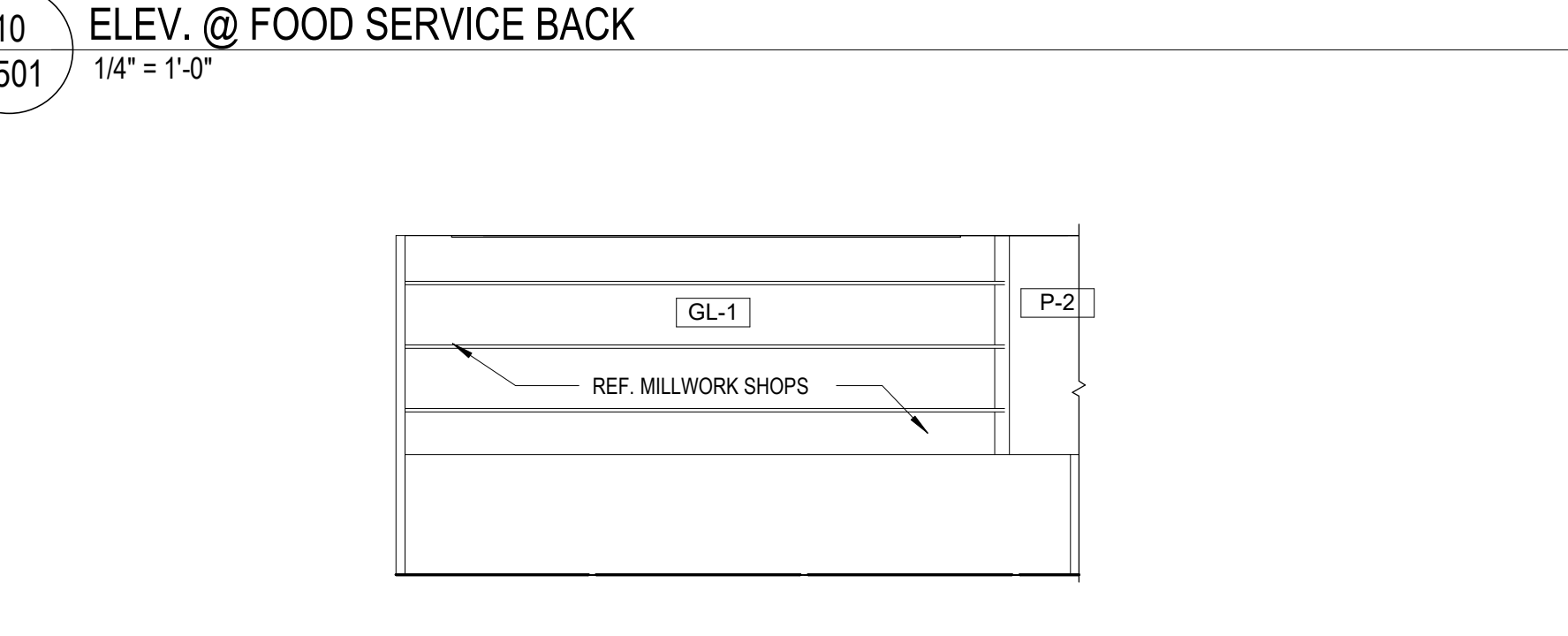
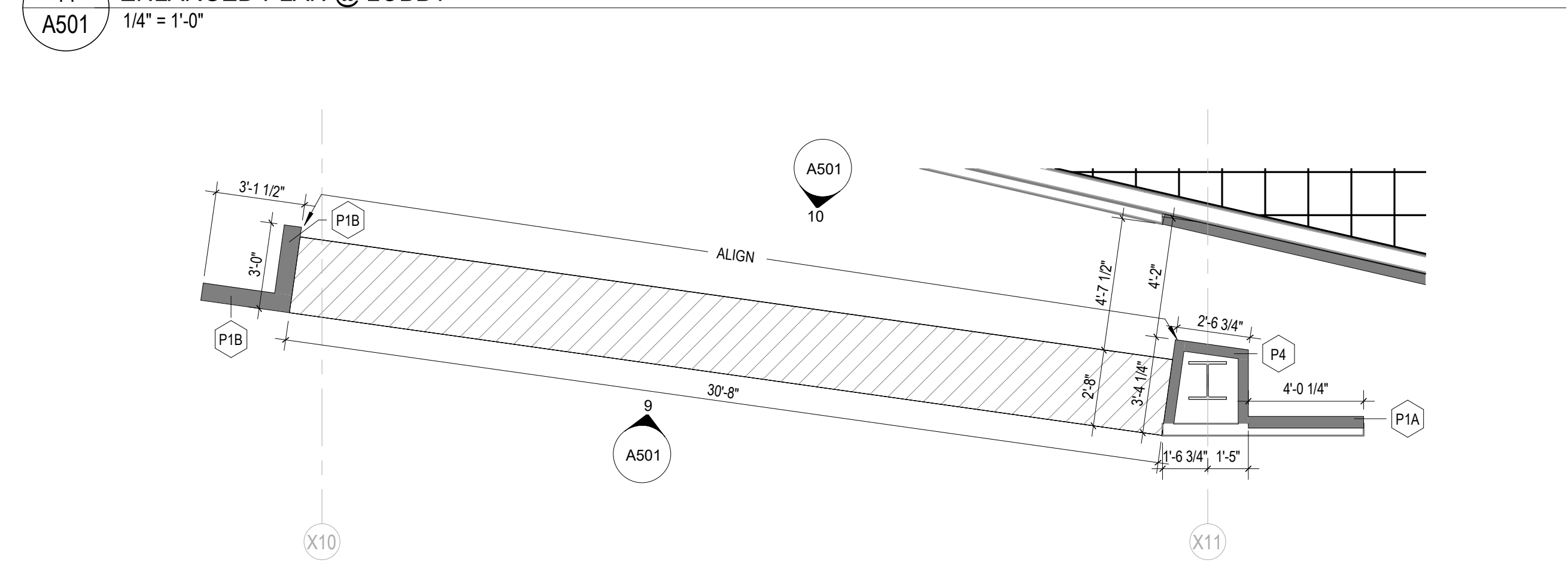
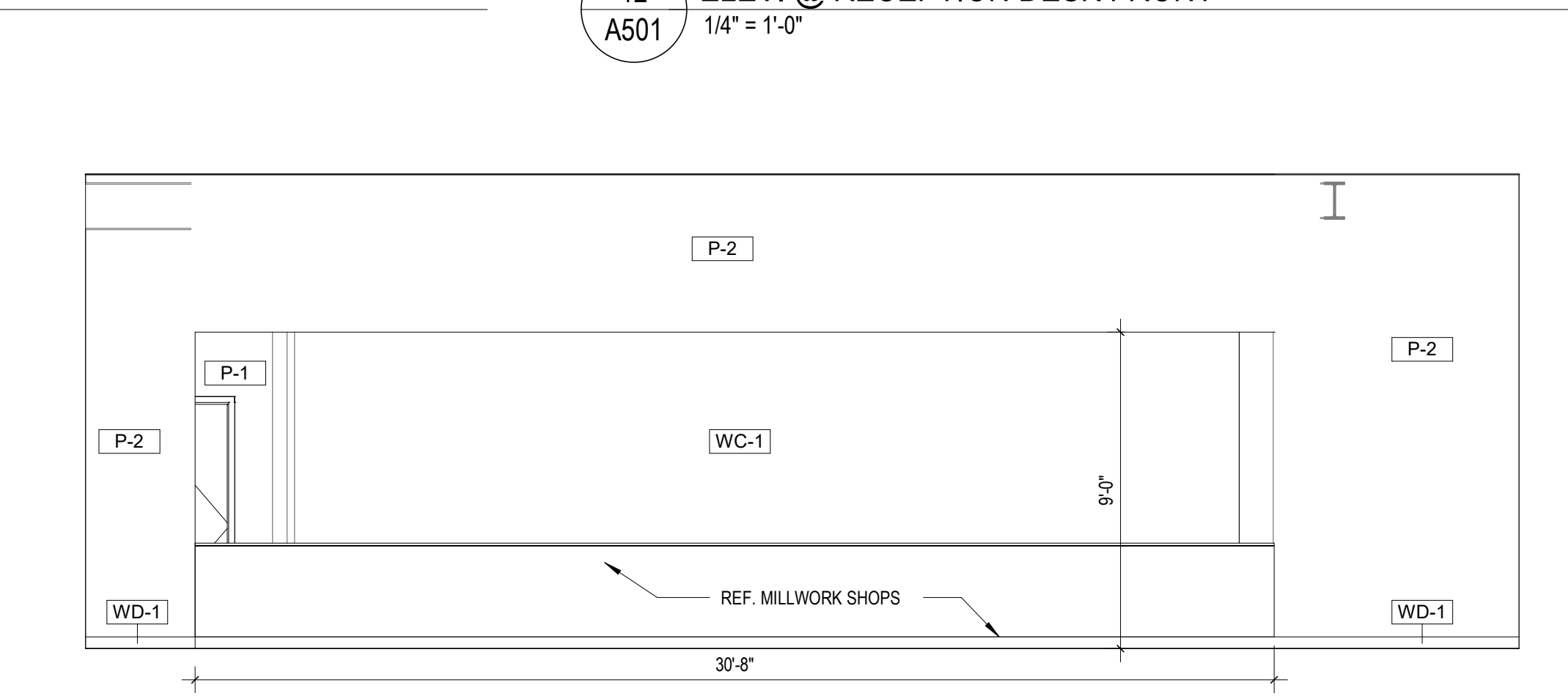
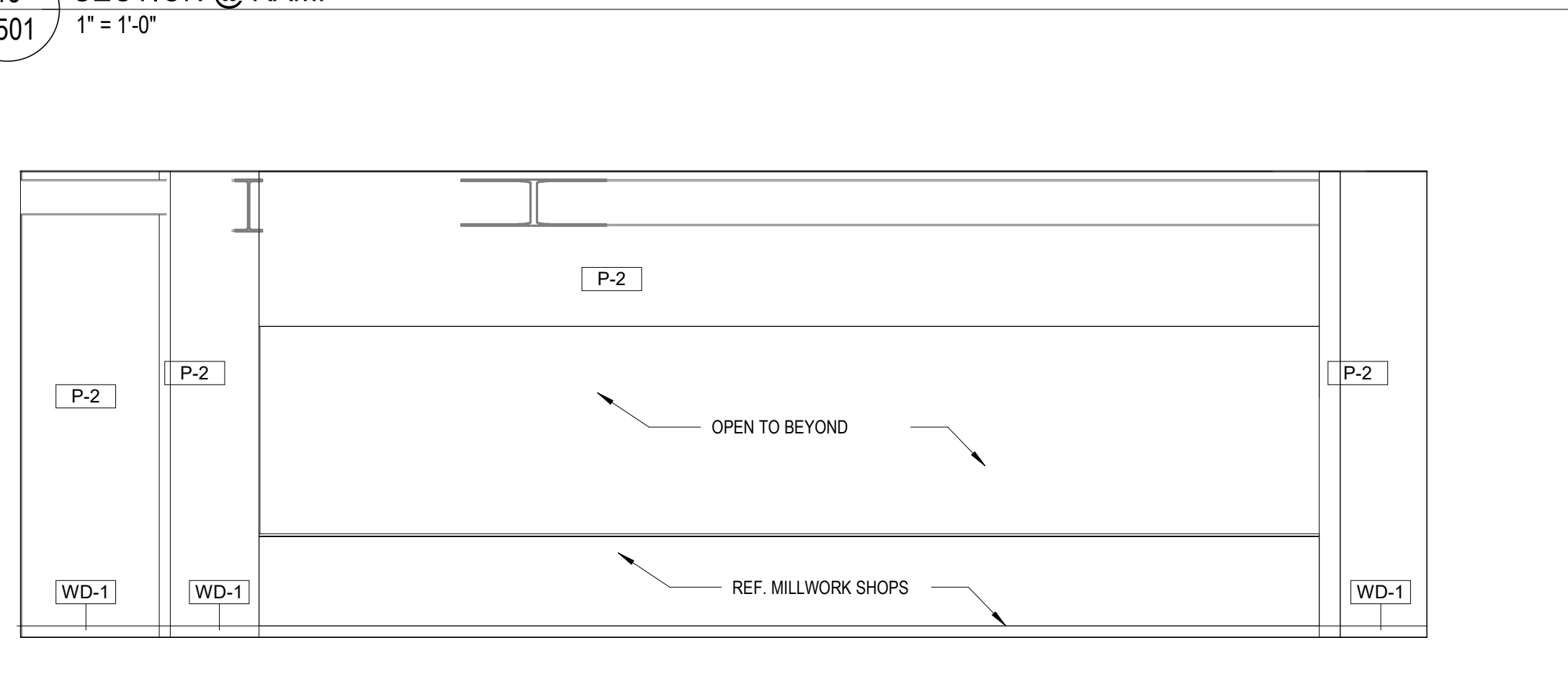
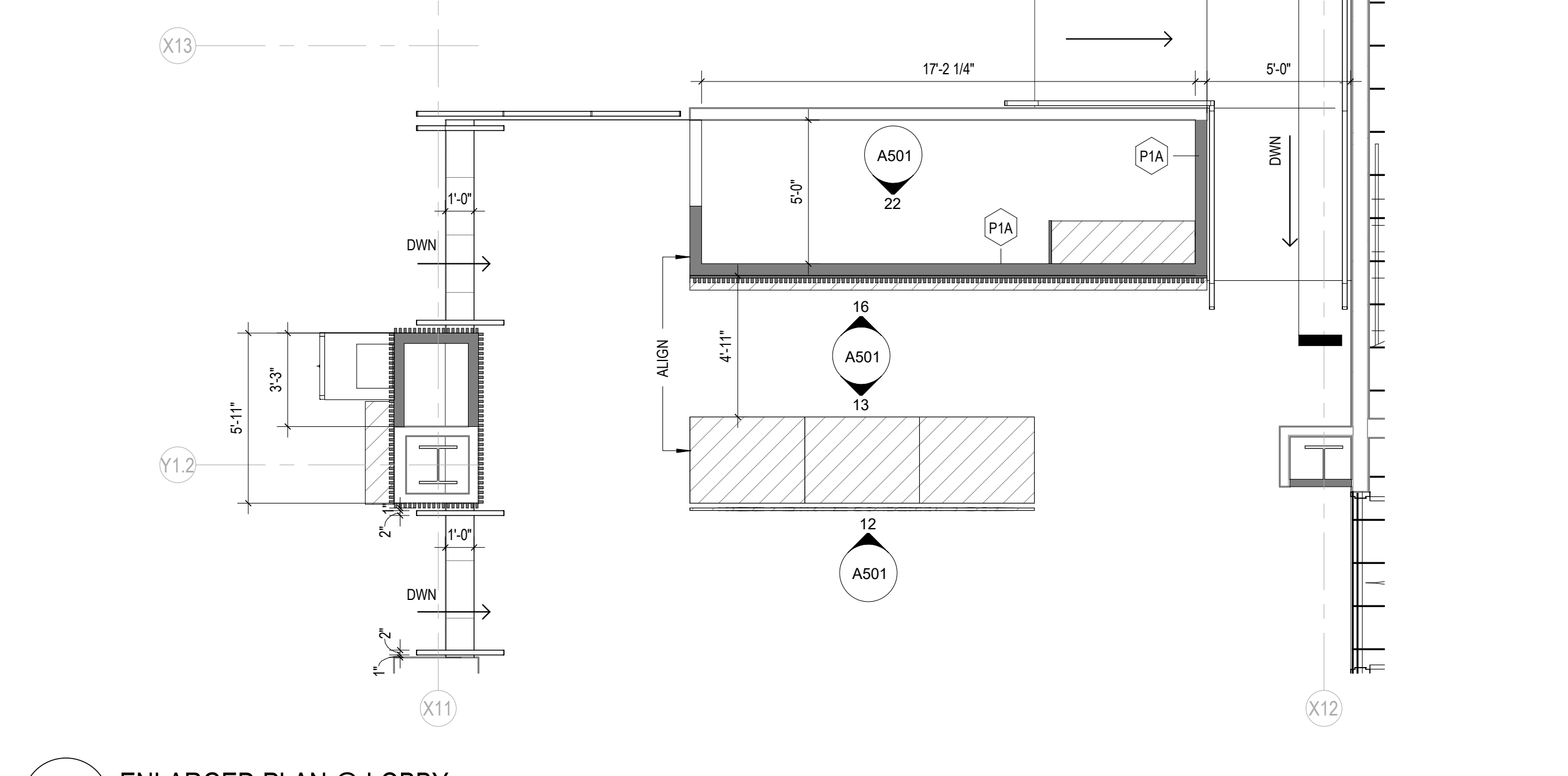
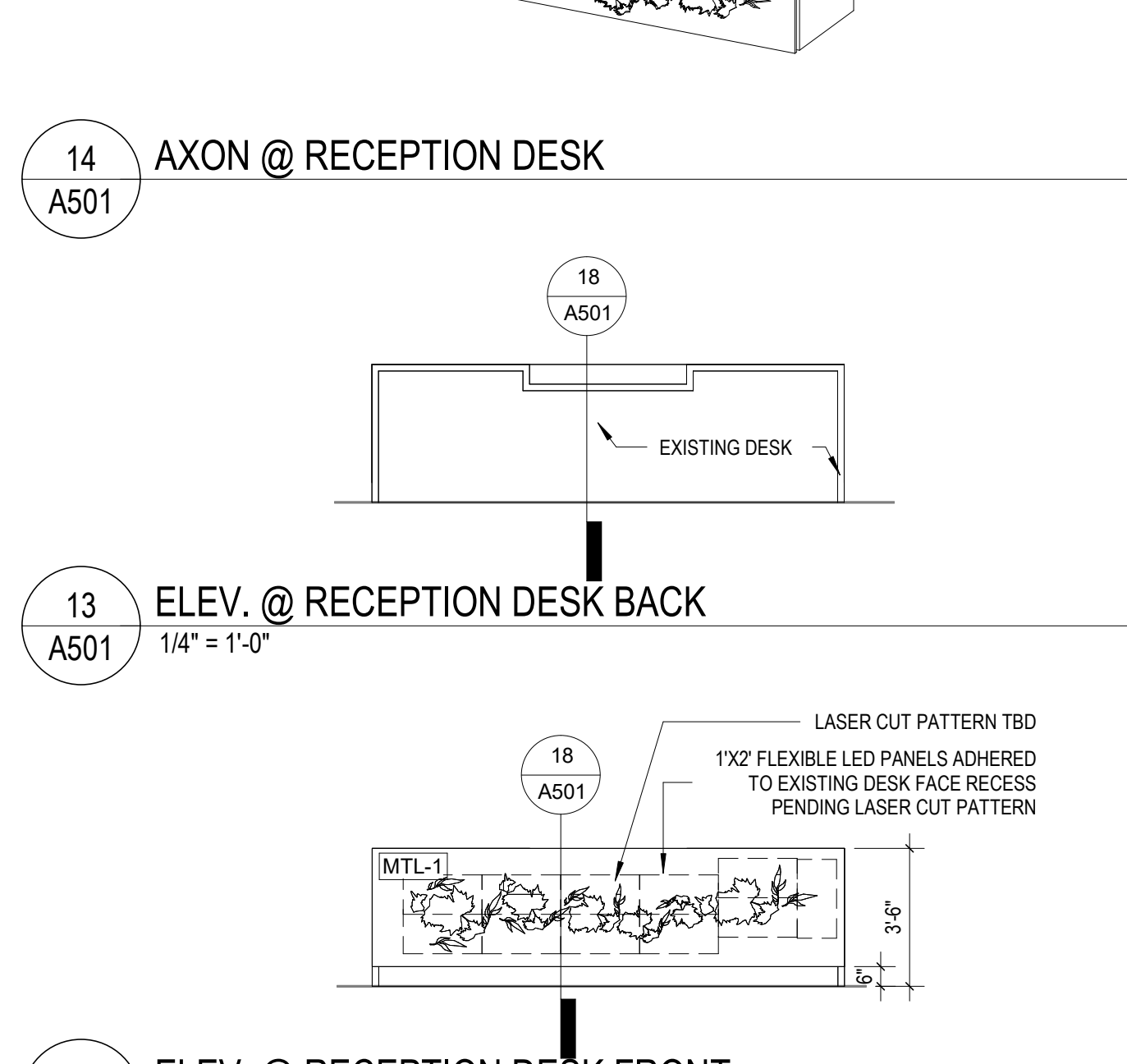
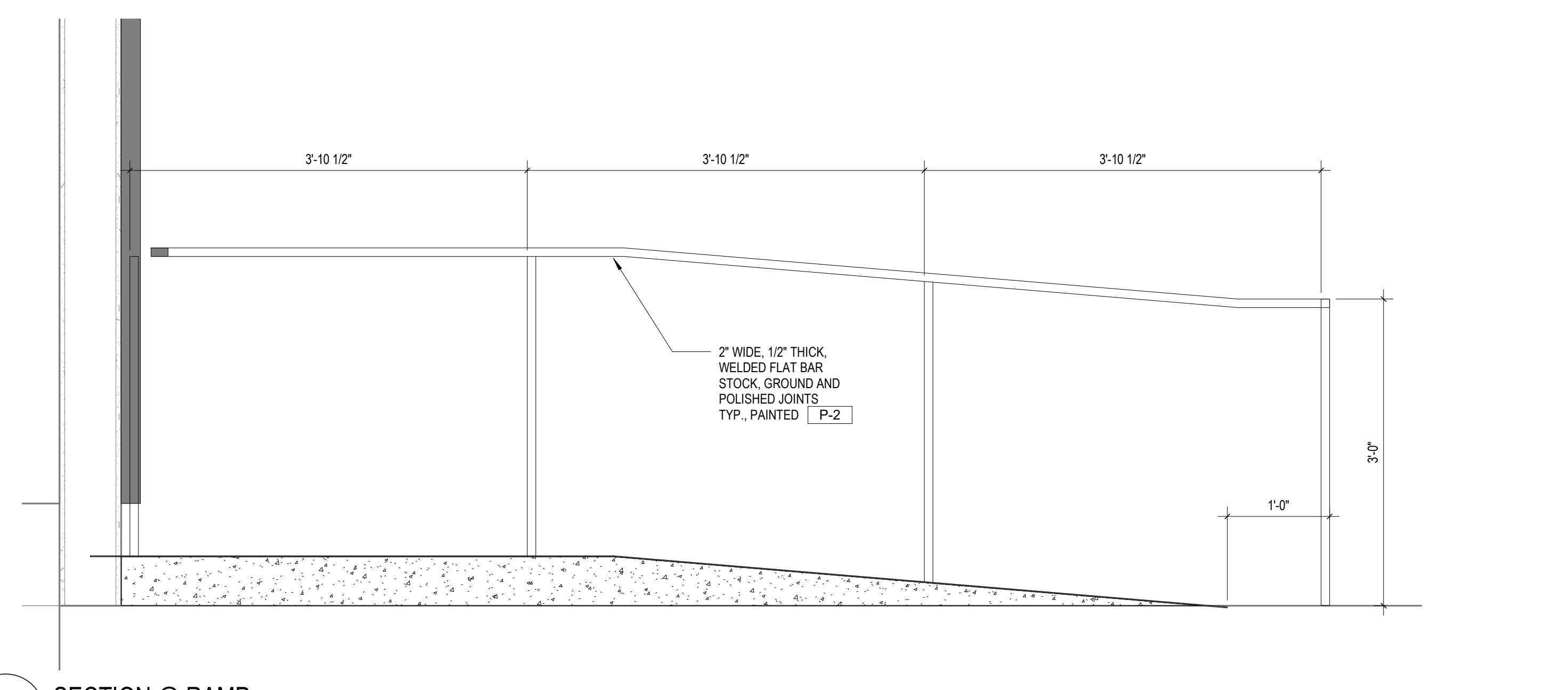
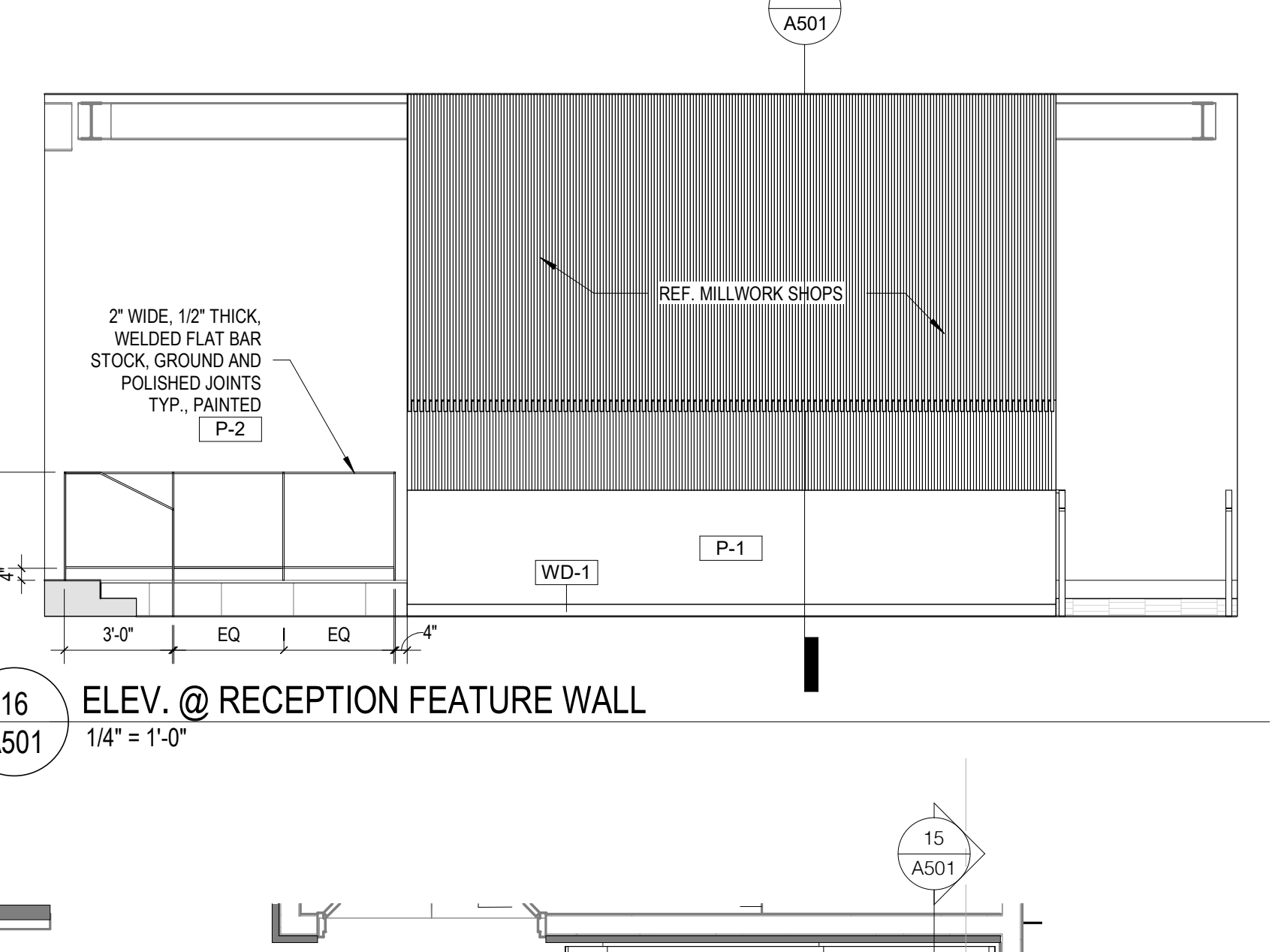
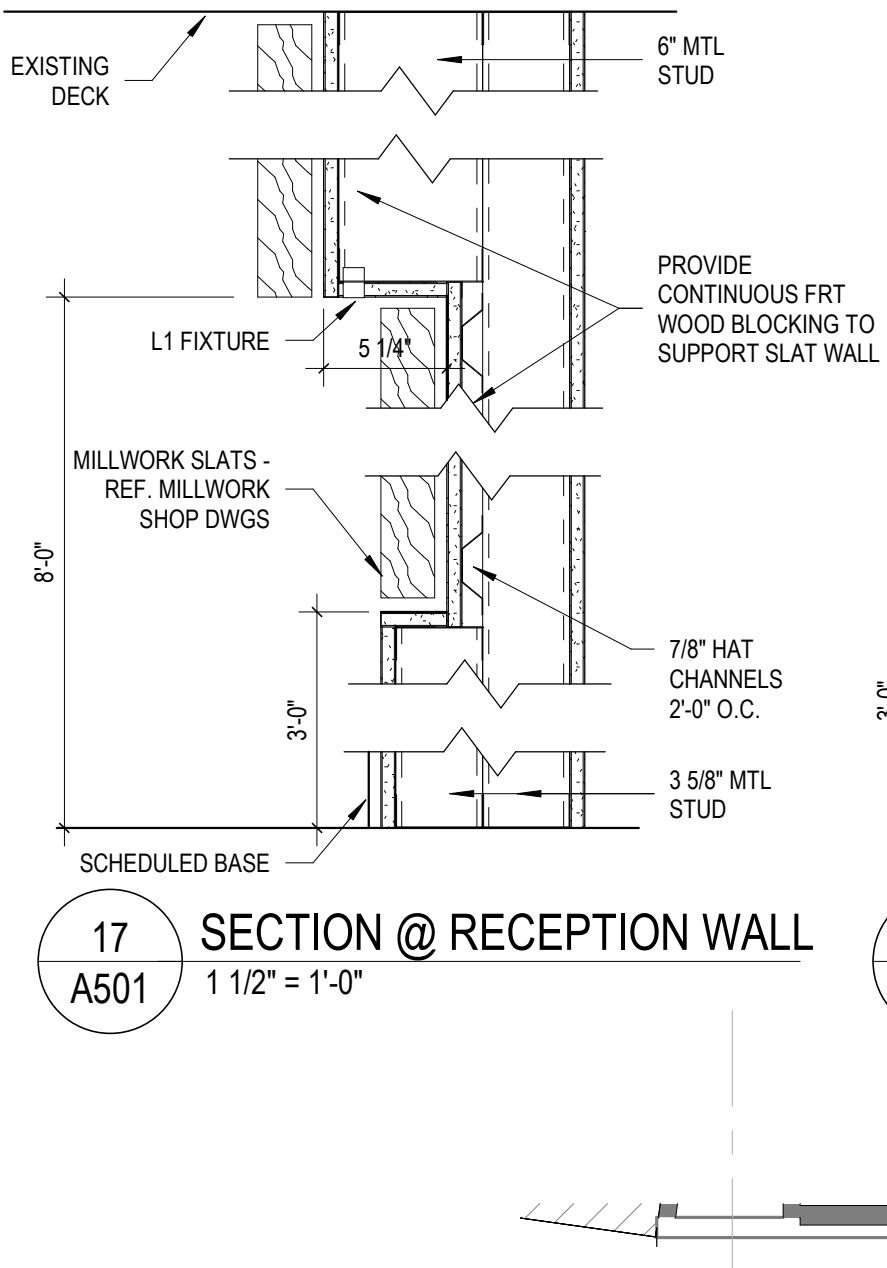
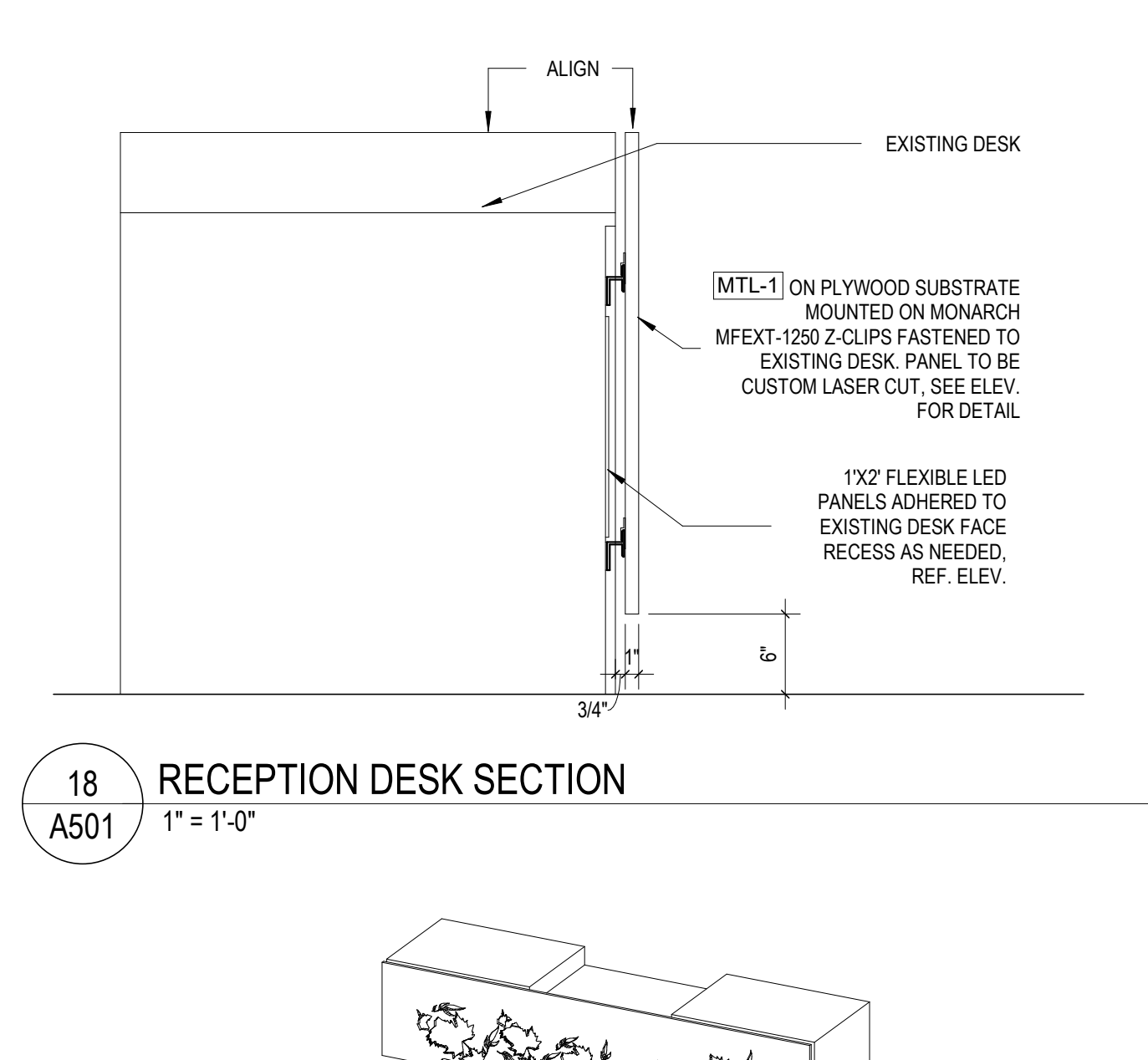
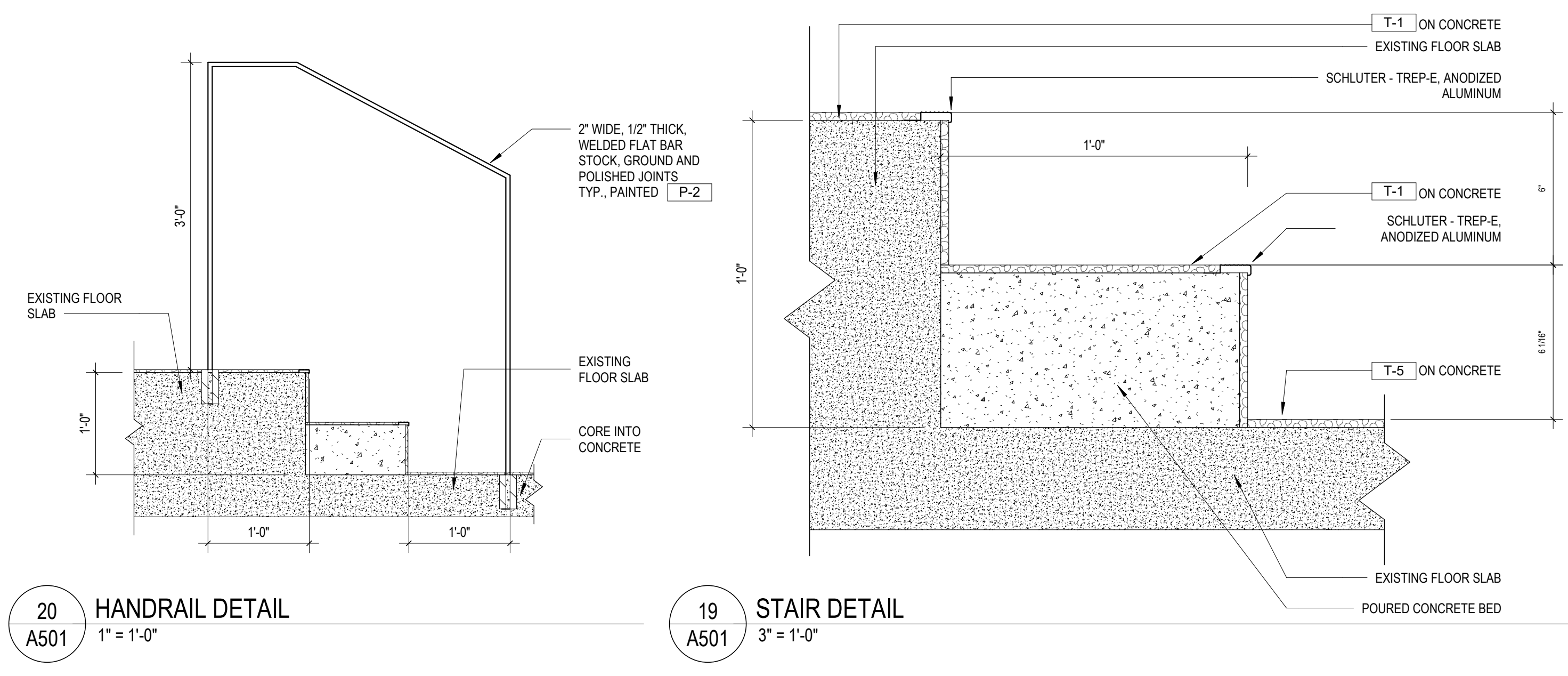
PHELPS CONSTRUCTION GROUP
315 WOOTTON STREET - UNIT K
BOONTON, NJ 07005
T. 973.402.0004

LEVY RESTAURANTS
980 N. MICHIGAN AVE.
CHICAGO, IL 60611
T. 847.875.9813

KSS

ISSUE FOR CONSTRUCTION
Project No.: 2023-23097
Issued: 07/28/23
CONSTRUCTION PLAN

A101



THE RINKSIDE LOUNGE
PRUDENTIAL CENTER
147-191 MULBERRY STREET, NEWARK, NJ 07102

No	Date	Revision

KSS ARCHITECTS
Princeton | Philadelphia
337 Witherspoon Street
Princeton, NJ 08542
t: 609.921.1131

BD ENGINEERING
44 MAIN ST.
FARMINGDALE, NJ 07727
t: 732.886.5432

PHELPS CONSTRUCTION GROUP
315 WOOTTON STREET - UNIT K
BOONTON, NJ 07005
T. 973.402.0004

LEVY RESTAURANTS
980 N. MICHIGAN AVE.
CHICAGO, IL 60611
T. 847.875.9813

KSS

ISSUE FOR CONSTRUCTION
Project No.: 2023-23097
Issued: 06/23/23
ENLARGED PLANS,
ELEVATIONS, &
DETAILS

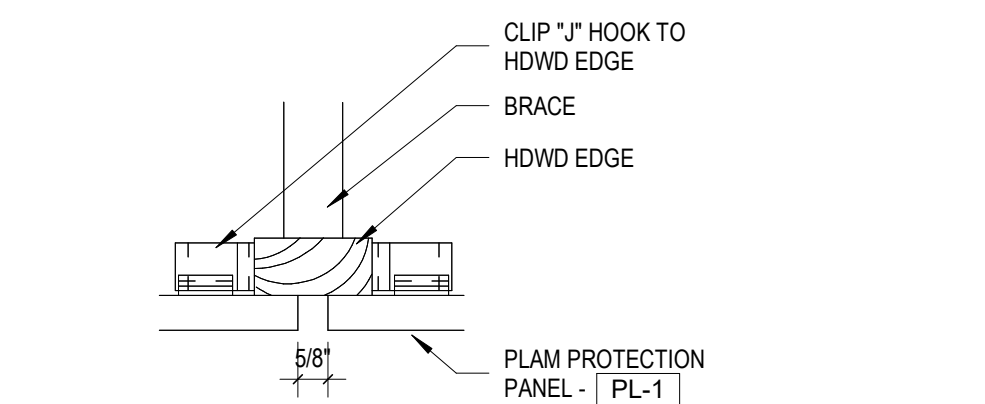
A501

C:\Users\avittoria\Documents\23097_Prudential Center Rinkside Lounge_Rev012023_Avittoria.rvt 7/28/2023 2:01:17 PM

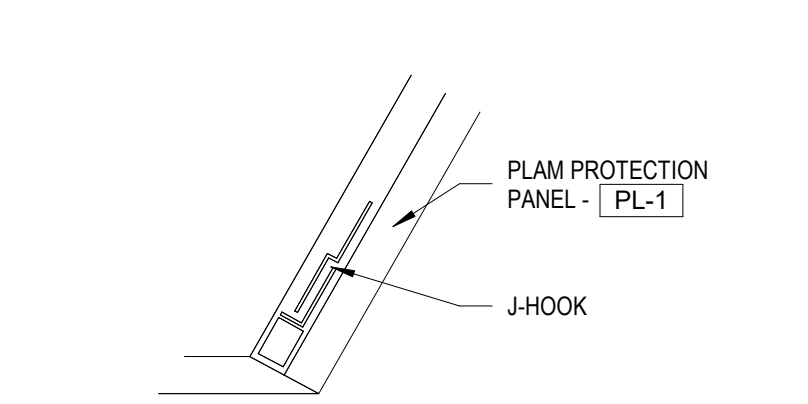
TOILET ACCESSORIES					
TYPE MARK	DESCRIPTION	MANUFACTURER	MODEL	FINISH	COMMENTS
TA-1	GRAB BAR - 42" LONG, 1 1/2" DIAMETER	KOHLER	K-11896-S PURIST GRAB BAR	MATTE BLACK @ MULTI-STALL TOILET ROOMS, POLISHED STAINLESS @ SINGLE TOILET ROOMS	
TA-2	GRAB BAR - 36" LONG, 1 1/2" DIAMETER	KOHLER	K-11896-S PURIST GRAB BAR	MATTE BLACK @ MULTI-STALL TOILET ROOMS, POLISHED STAINLESS @ SINGLE TOILET ROOMS	
TA-3	GRAB BAR - 18" LONG, 1 1/2" DIAMETER	KOHLER	K-11892-S PURIST GRAB BAR	MATTE BLACK @ MULTI-STALL TOILET ROOMS, POLISHED STAINLESS @ SINGLE TOILET ROOMS	MOUNT 40" FROM SIDE WALL, 39-41" AFF
TA-4	SURFACE MOUNTED TOILET SEAT-COVER DISPENSER, WASTE DISPOSAL, AND TOILET TISSUE DISPENSER	AMERICAN SPECIALTIES, INC.	0487-L-9		MEN'S RESTROOM STALL
TA-5	RECESSED TOILET SEAT-COVER DISPENSER, WASTE DISPOSAL, AND TOILET TISSUE DISPENSER	AMERICAN SPECIALTIES, INC.	0487		AT SINGLE TOILET ROOMS ONLY
TA-6	TOILET PARTITION MOUNTED TOILET SEAT-COVER DISPENSER, WASTE DISPOSAL, AND TOILET TISSUE DISPENSER	AMERICAN SPECIALTIES, INC.	0481		WOMEN'S RESTROOM STALLS
TA-7	24" WIDE X 36" HIGH WALL MIRROR	AMERICAN SPECIALTIES, INC.	0600-3436 STAINLESS STEEL INTER-LOCK ANGLE FRAME MIRROR	STAINLESS STEEL	AT SINGLE TOILET ROOMS ONLY
TA-8	RECESSED PAPER TOWEL DISPENSER AND WASTE RECEPTACLE SOAP DISPENSER	AMERICAN SPECIALTIES, INC.	6467-4-1PC	MATTE BLACK	AT MULTI-STALL TOILET ROOMS ONLY
TA-9	SOAP DISPENSER	SLOAN	ESD-2000 SLOAN DECK MOUNTED FOAM SOAP DISPENSER	GRAPHITE FINISH @ MULTI-STALL TOILET ROOMS, POLISHED CHROME @ SINGLE TOILET ROOMS	
TA-10	CLOTHES HOOK W/BUMBER	AMERICAN SPECIALTIES, INC.	0714		
TA-11	FLOOR MOUNTED TOILET PARTITION	HADRAN	ELITE SERIES	#4 BRUSHED STAINLESS STEEL	HARDWARE TO BE STAINLESS STEEL
TA-12	WALL HUNG URINAL SCREEN	HADRAN	ELITE SERIES	#4 BRUSHED STAINLESS STEEL	HARDWARE TO BE STAINLESS STEEL
TA-13	MOP AND BROOM HOLDER - 36" WIDE	AMERICAN SPECIALTIES, INC.	0786-4		
TA-14	COAT HOOK	AMERICAN SPECIALTIES, INC.	7340-41 MATTE BLACK ROBE HOOK (SINGLE), SURFACE MOUNTED	MATTE BLACK	AT MULTI-STALL TOILET ROOMS ONLY
TA-15	24" WIDE X 36" HIGH WALL MIRROR	AMERICAN SPECIALTIES, INC.	0600-41 SERIES - MATTE BLACK STAINLESS STEEL INTER-LOCK ANGLE FRAME MIRROR	MATTE BLACK	AT MULTI-STALL TOILET ROOMS ONLY
TA-16	COAT HOOK	AMERICAN SPECIALTIES, INC.	7312 DOUBLE ROBE HOOK		AT SINGLE TOILET ROOMS ONLY
TA-17	RECESSED PAPER TOWEL DISPENSER AND WASTE RECEPTACLE	AMERICAN SPECIALTIES, INC.	6467	STAINLESS STEEL	AT SINGLE TOILET ROOMS ONLY

PLUMBING FIXTURE SCHEDULE				
MARK	DESCRIPTION	MANUFACTURER	MODEL	COMMENTS
PF-1	WALL MOUNTED SINK	IWS BATH COLLECTIONS	UNLIMITED 46 - ADA 18.3" CERAMIC BATHROOM SINK	WHITE FINISH - 2 HOLES
PF-2	UNDER COUNTER SINK	AMERICAN STANDARD	BOULEVARD UNDER COUNTER SINK - 0610000.020	WHITE FINISH
PF-3	SINK FAUCET	SLOAN	EAF-200 OPTIMA HARDWIRED-POWERED DECK MOUNTED MID-BODY	GRAPHITE FINISH @ MULTI-STALL TOILET ROOMS, POLISHED CHROME @ SINGLE TOILET ROOMS

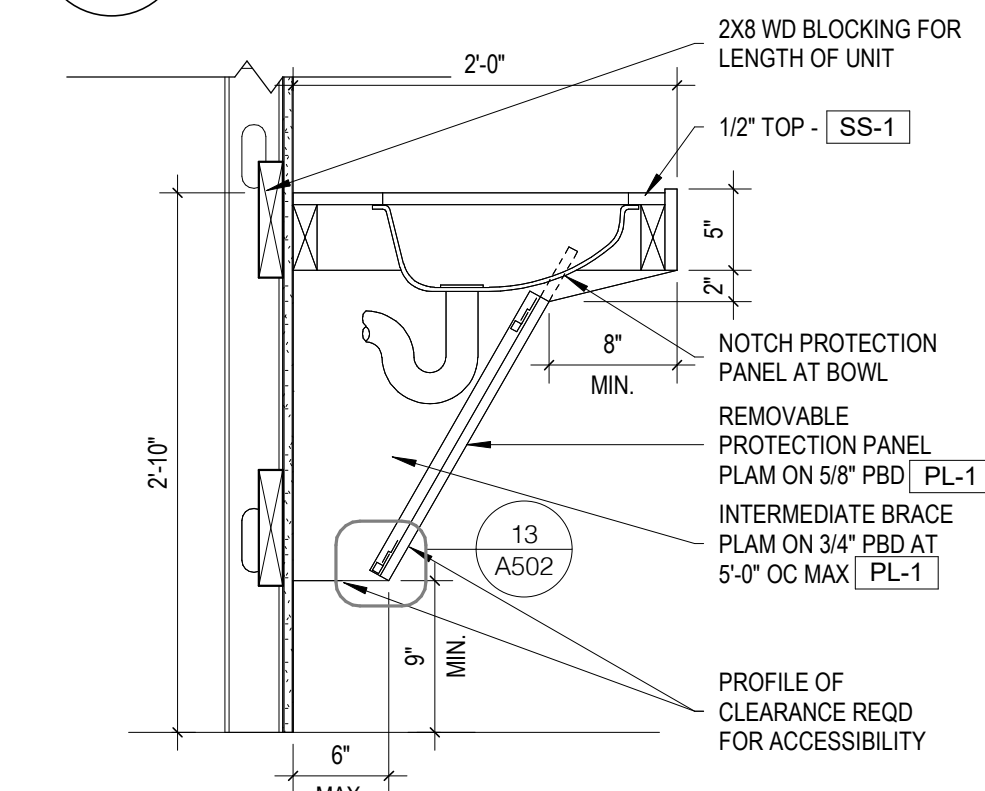
FINAL TOILET ACCESSORIES & PLUMBING FIXTURES TO BE CONFIRMED BY OWNER.



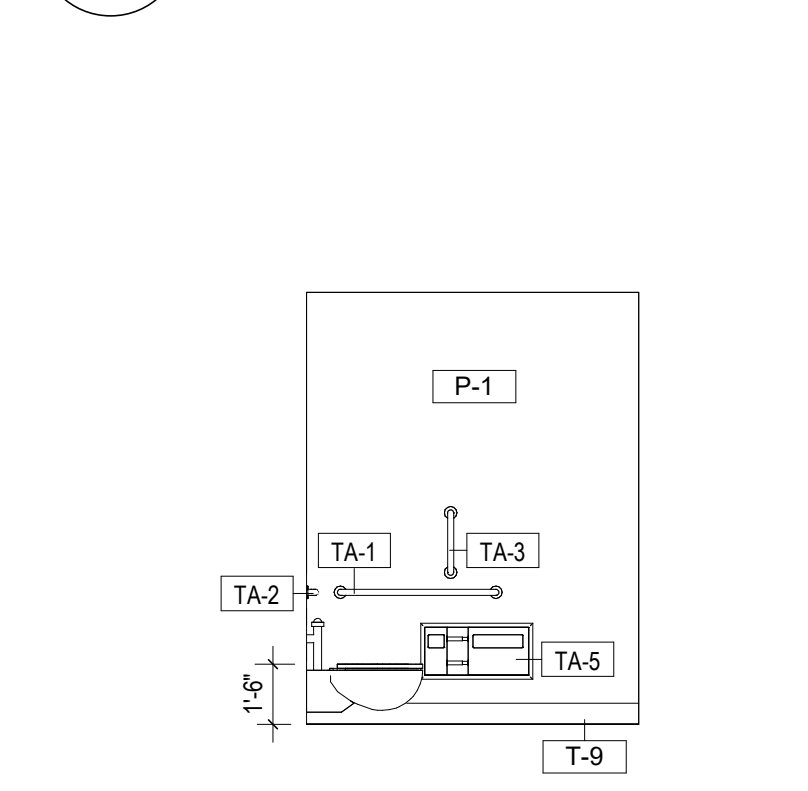
14 RESTROOM COUNTER PANEL REVEAL
3" = 1'-0"



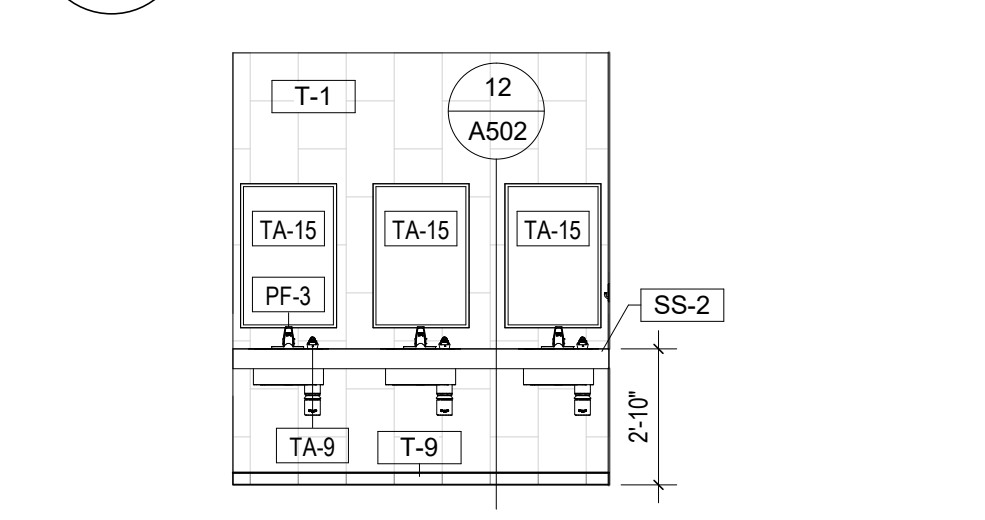
13 RESTROOM COUNTER PANEL
3" = 1'-0"



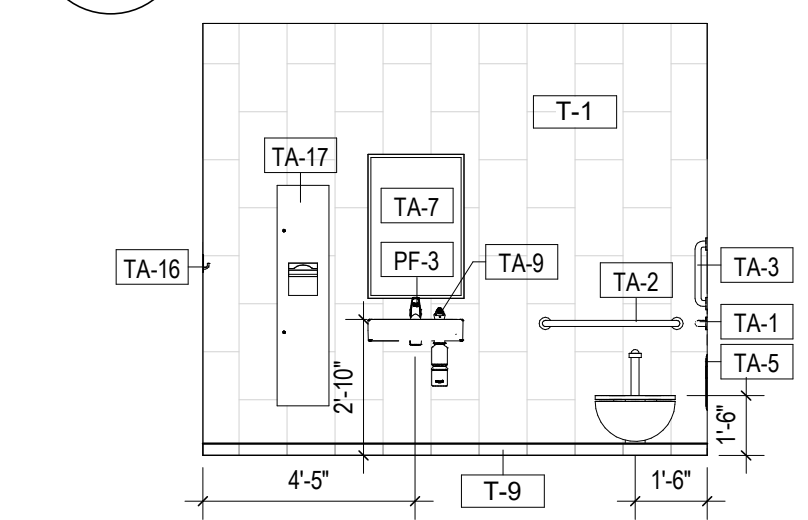
12 SECTION @ RESTROOM COUNTER
1" = 1'-0"



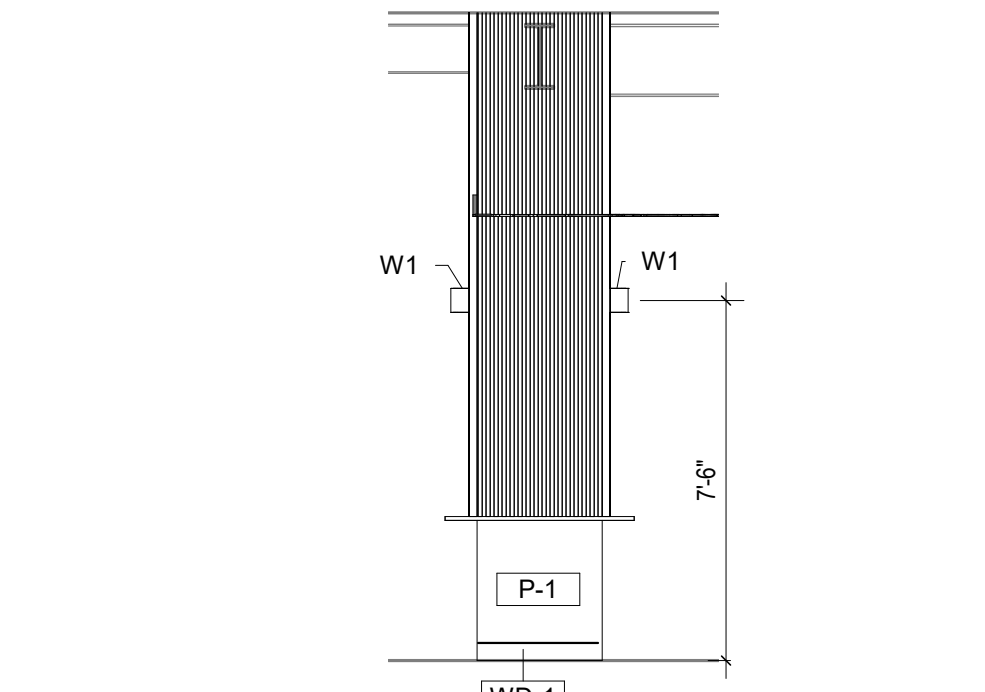
11 ELEV. @ TOILET ROOM SIDE
1/4" = 1'-0"



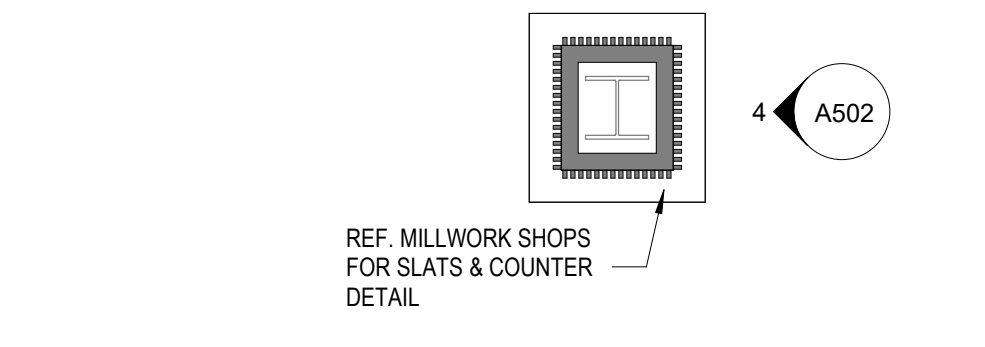
10 ELEV. @ MULTI-STALL SINKS
1/4" = 1'-0"



9 ELEV. @ TOILET ROOM
1/4" = 1'-0"



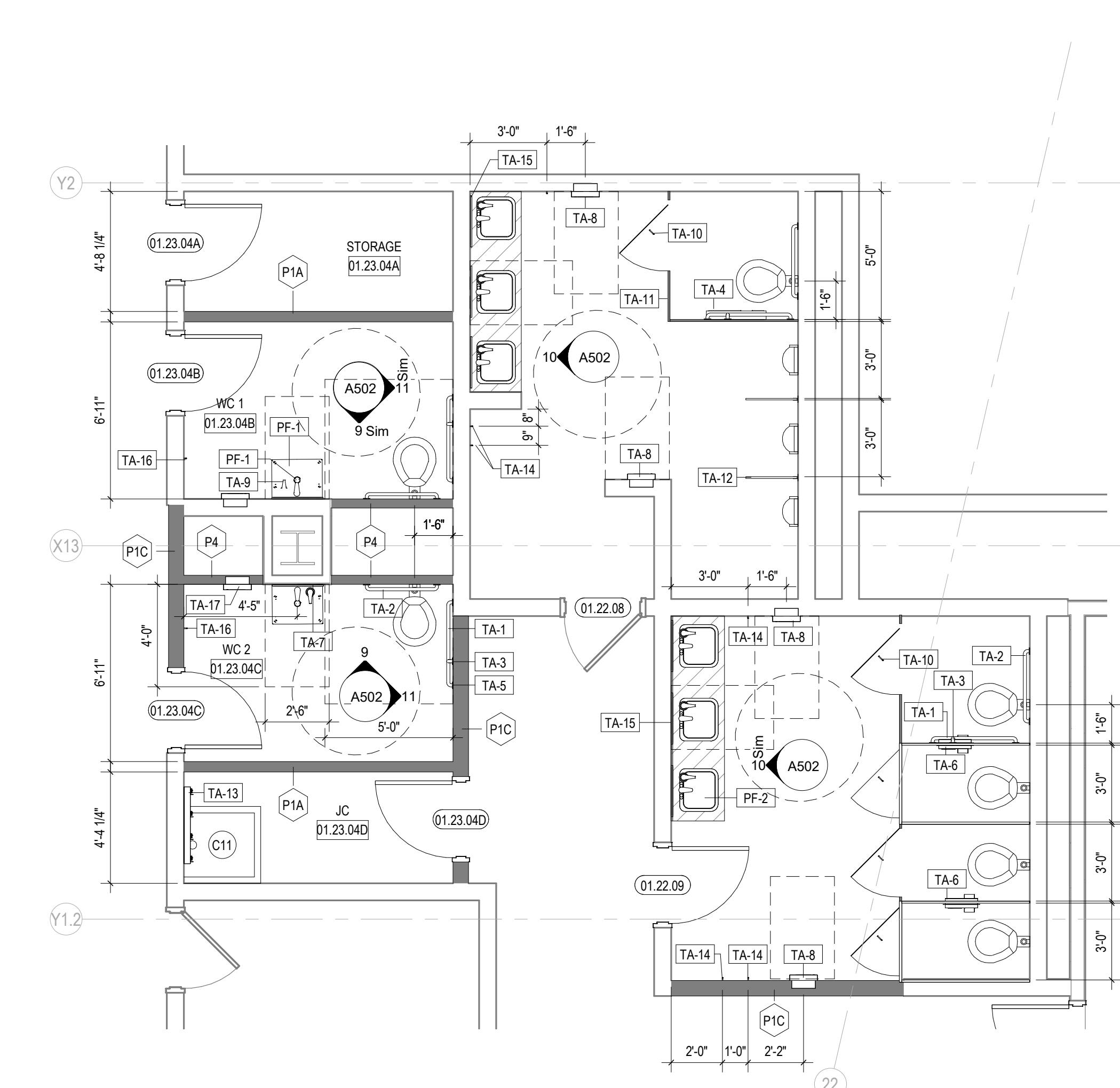
4 ELEV. @ TYP. COLUMN MILLWORK
1/4" = 1'-0"



3 ENLARGED PLAN @ TYP. COLUMN MILLWORK
1/4" = 1'-0"

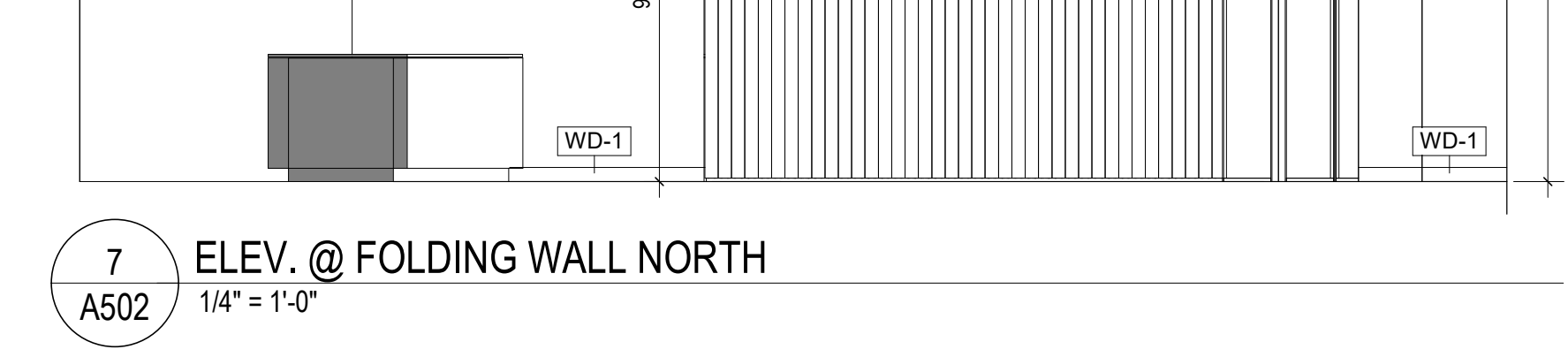


2 SECTION @ WALL BUMP-OUT
1 1/2" = 1'-0"

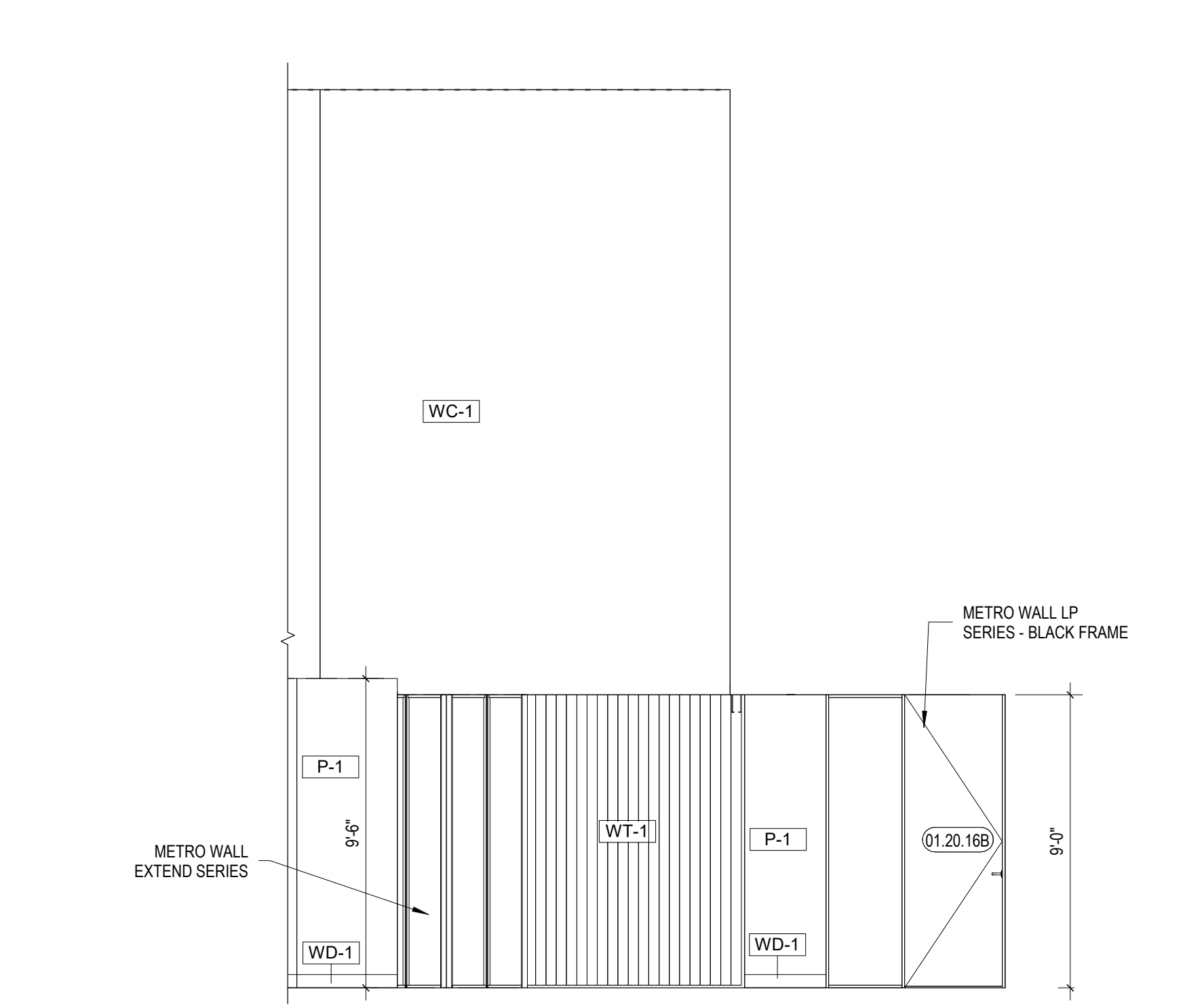


8 ENLARGED TOILET ROOM PLAN
1/4" = 1'-0"

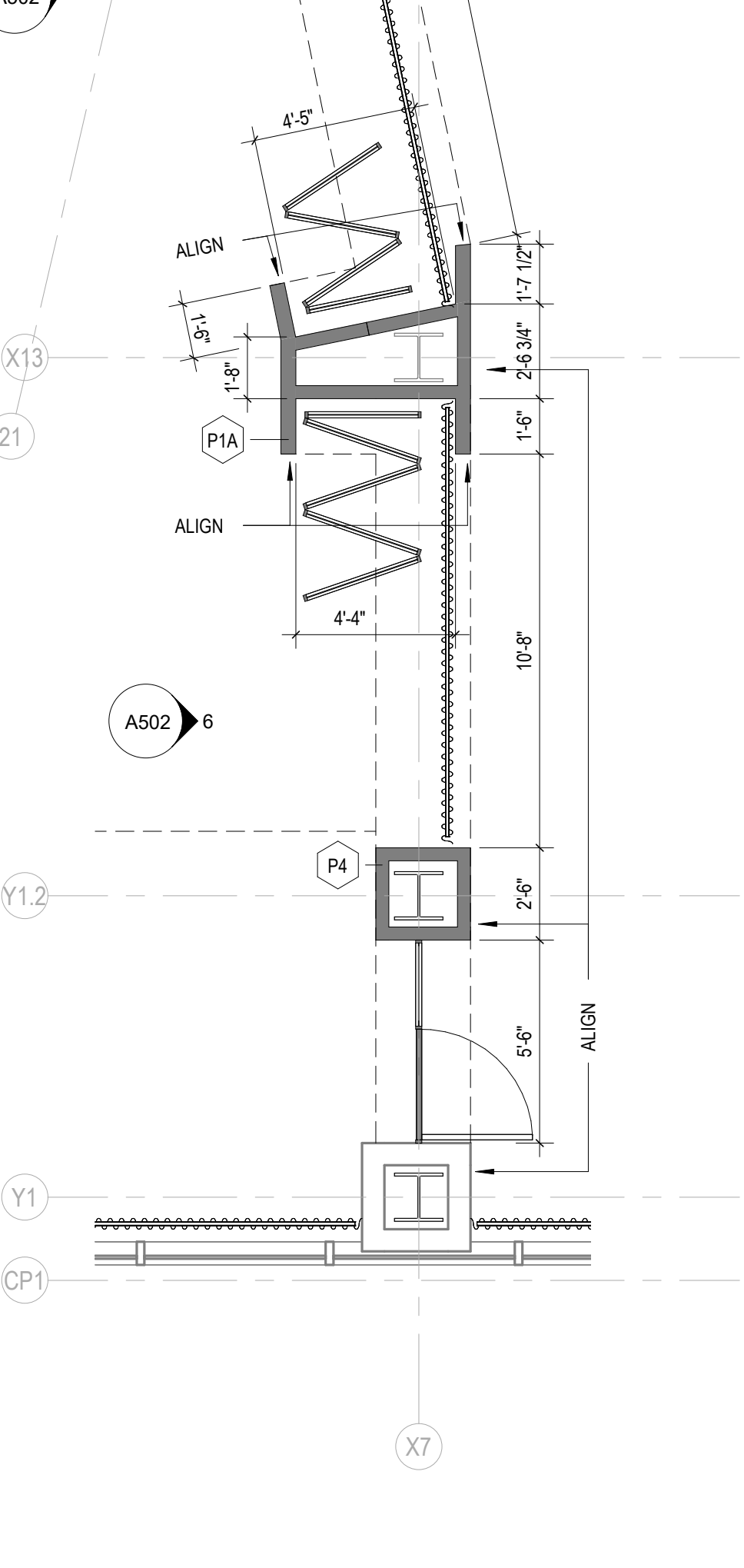
TYP. MOUNTING HEIGHTS



7 ELEV. @ FOLDING WALL NORTH
1/4" = 1'-0"



6 ELEV. @ FOLDING WALL SOUTH
1/4" = 1'-0"



5 ENLARGED PLAN @ FOLDING GLASS WALL
1/4" = 1'-0"



1 ELEV. @ PRIVATE FUNCTION WEST WALL
1/4" = 1'-0"

THE RINKSIDE LOUNGE
PRUDENTIAL CENTER
147-191 MULBERRY STREET, NEWARK, NJ 07102

No	Date	Revision

KSS ARCHITECTS
Princeton | Philadelphia
337 Witherspoon Street
Princeton, NJ 08542
t: 609.921.1131

BD ENGINEERING
44 MAIN ST.
FARMINGDALE, NJ 07727
t: 732.886.5432

PHELPS CONSTRUCTION GROUP
315 WOOTTON STREET - UNIT K
BOONTON, NJ 07005
T. 973.402.0004

LEVY RESTAURANTS
980 N. MICHIGAN AVE.
CHICAGO, IL 60611
T. 847.875.9813

KSS

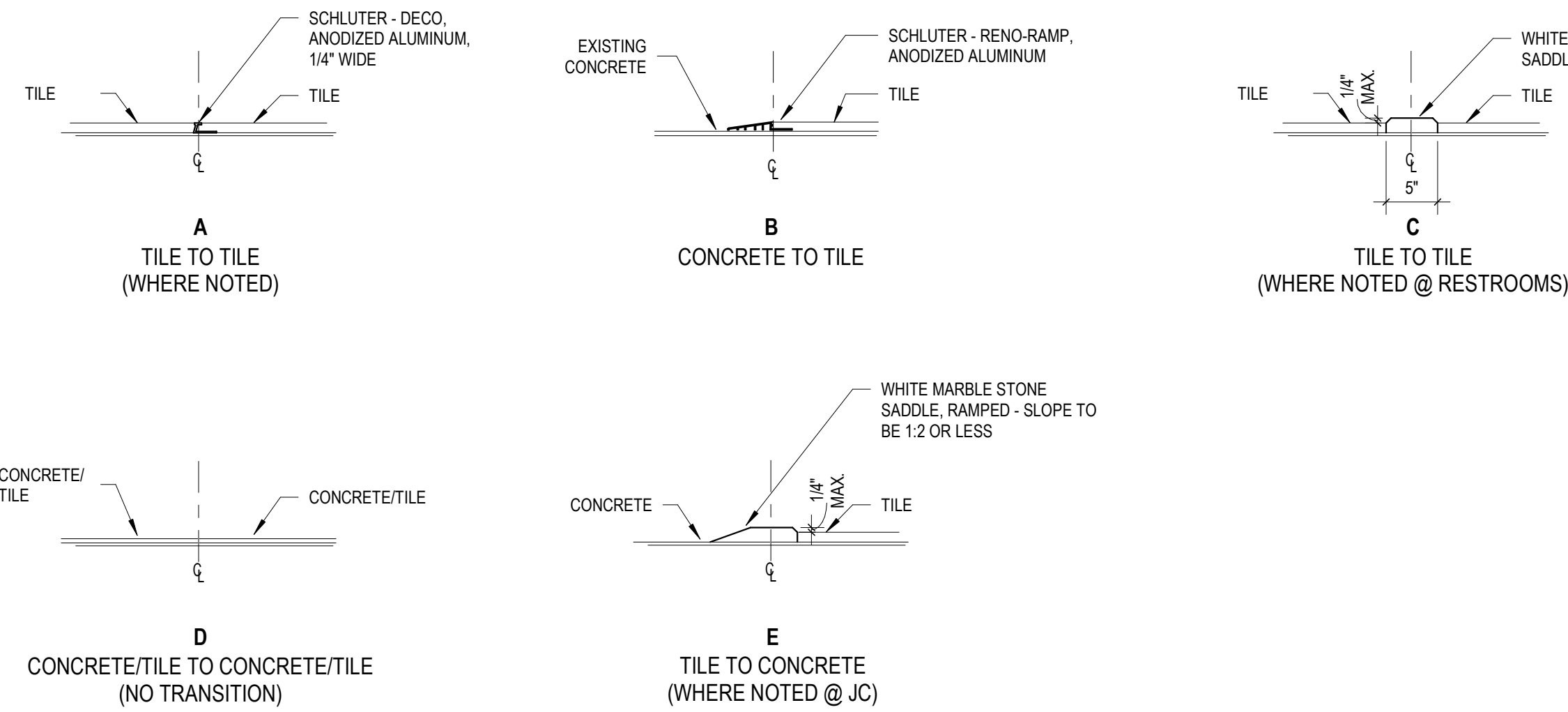
ISSUE FOR CONSTRUCTION
Project No.: 2023-23097
Issued: 06/16/23
ENLARGED PLANS,
ELEVATIONS, &
DETAILS

A502

C:\Users\avittoria\Documents\23097_Prudential Center Rinkside Lounge_Rev01\2023_Avittoria.rvt 7/28/2023 2:01:21 PM



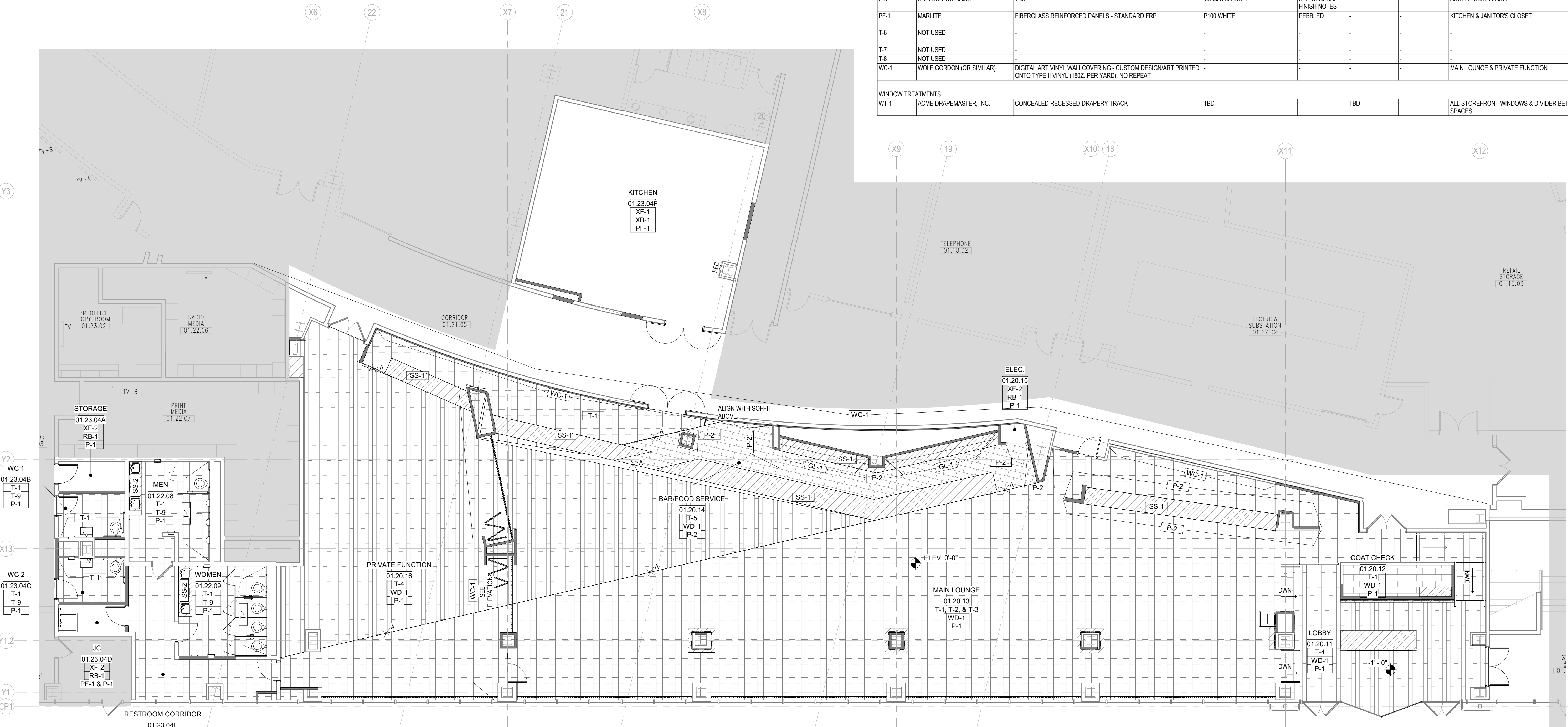
INTERIOR RENDERINGS (FOR REFERENCE ONLY)



NOTE:
1. COORDINATE SILL TYPES WITH FINISH PLANS.
2. ENSURE ALL TRANSITIONS ARE ADA COMPLIANT.

SILL TYPES

Finish Schedule									
Tag	Manufacturer	Style	Color	Finish	Size	Installation	Location	Remarks	Contact
FLOORING									
T-1	DALTILE	ENLITE	ILLUMINATE- EL60	MATTE	12"x24"	OFFSET	MAIN LOUNGE, LOBBY & RESTROOM FLOOR, RESTROOM WALL TILE	MAIN LOUNGE TO BE CUSTOM PATTERN WITH T-1, T-2, & T-3. PATTERN TBC WITH ARCHITECT. GROUT TBD.	Rachel Hamur rachel.hamur@daltile.com
T-2	DALTILE	ENLITE	AWAKEN- EL61	MATTE	12"x24"	OFFSET	MAIN LOUNGE & LOBBY FLOOR	MAIN LOUNGE TO BE CUSTOM PATTERN WITH T-1, T-2, & T-3. PATTERN TBC WITH ARCHITECT. GROUT TBD.	Rachel Hamur rachel.hamur@daltile.com
T-3	DALTILE	ENLITE	TRANSCEND- EL64	MATTE	12"x24"	OFFSET	MAIN LOUNGE & LOBBY FLOOR	MAIN LOUNGE TO BE CUSTOM PATTERN WITH T-1, T-2, & T-3. PATTERN TBC WITH ARCHITECT. GROUT TBD.	Rachel Hamur rachel.hamur@daltile.com
T-4	DALTILE	EMERSON WOOD	ASH WHITE- EPO6	MATTE	8"x48"	OFFSET	PRIVATE FUNCTION FLOOR	GROUT TBD	Rachel Hamur rachel.hamur@daltile.com
T-5	CROSSVILLE TILE	NATIVE METALS	GRAPHITE BLACK	MATTE	12"x24"	OFFSET	BAR FLOOR	GROUT TBD	Nicole Flexon nflexon@gsite.com
XF-1	STONHARD	EPOXY FLOORING - STONHARD, STONBLEND GSI-G	WOLF GRAY	-	-	-	KITCHEN	-	Tiffany Stout tiffany.stout@stonhard.com
XF-2	-	SEALED CONCRETE	-	-	-	-	JANITOR'S CLOSET, ELECTRICAL & STORAGE	-	-
MILLWORK									
MTL-1	CHEMETAL	-	613 - EMBER ALUMINUM	-	-	-	BAR AND FOOD SERVICE COUNTER FRONTS	-	-
PL-1	TBD	TBD	TBD	TBD	Size	-	RESTROOM COUNTER PANEL	-	-
SS-1	CASARSTONE	-	S810 BLACK TEMPAL	-	30 mm	-	BAR AND FOOD SERVICE COUNTERTOPS	-	-
SS-2	WILSONART	-	34035 NORTH CASCADE	-	2CM	-	RESTROOM COUNTERTOPS	-	-
WALL BASE									
RB-1	JOHNSONITE	BASEWORKS	38 PEWTER CG	-	4" HIGH	-	JANITOR'S CLOSET, ELECTRICAL & STORAGE	-	Karen Levey-Lynch karen.levy-lynch@arkett.com
T-9	DALTILE	ENLITE	ILLUMINATE- EL60	MATTE	3"x24" BULLNOSE	-	RESTROOM WALL BASE	-	Rachel Hamur rachel.hamur@daltile.com
WD-1	-	POPLAR, PAINT GRADE SOLID WOOD	PAINTED P-1, UNO	-	17"x4"	-	GENERAL WALL BASE	PAINT FINISH TO BE SEMI-GLOSS	-
XB-1	STONHARD	EPOXY BASE - STONHARD, STONBLEND GSI-G	WOLF GRAY	-	-	-	KITCHEN	-	Tiffany Stout tiffany.stout@stonhard.com
WALLS									
GL-1	-	ACID-ETCHED, LOW IRON MIRROR GLASS	-	-	-	-	BAR BACKSPLASH	BOD, BENCHMARK SATINTECH ETCHED ARCHITECTURAL GLASS - LOW IRON, LAMINATED TO MIRROR	-
P-1	SHERWIN WILLIAMS	SW 7004	SNOWBOUND	SEE GENERAL FINISH NOTES	-	-	GENERAL WALL PAINT	-	-
P-2	SHERWIN WILLIAMS	SW 6258	TRICORN BLACK	SEE GENERAL FINISH NOTES	-	-	ACCENT WALL PAINT	-	-
P-3	SHERWIN WILLIAMS	TBD	TO MATCH WC-1	SEE GENERAL FINISH NOTES	-	-	ACCENT DOOR PAINT	-	-
PF-1	MARLITE	FIBERGLASS REINFORCED PANELS - STANDARD FRP	P100 WHITE	PEBBLED	-	-	KITCHEN & JANITOR'S CLOSET	PROVIDE FROM FINISH FLOOR TO 4'-0" AFF IN JANITOR'S CLOSET, FULL HEIGHT IN KITCHEN.	-
T-6	NOT USED	-	-	-	-	-	-	-	Rachel Hamur rachel.hamur@daltile.com
T-7	NOT USED	-	-	-	-	-	-	-	-
T-8	NOT USED	-	-	-	-	-	-	-	-
WC-1	WOLF GORDON (OR SIMILAR)	DIGITAL ART VINYL WALLCOVERING - CUSTOM DESIGN/ART PRINTED ONTO TYPE II VINYL (180Z PER YARD), NO REPEAT	-	-	-	-	MAIN LOUNGE & PRIVATE FUNCTION	DESIGN TBD	Joe D'Amato joe.damato@wolfgordon.com
WINDOW TREATMENTS									
WT-1	ACME DRAPEMASTER, INC.	CONCEALED RECESSED DRAPERY TRACK	TBD	-	TBD	-	ALL STOREFRONT WINDOWS & DIVIDER BETWEEN SPACES	FABRIC TBD	Chris Carscadden ccarscadden@acmedrapemaster.com



- GENERAL FINISH NOTES**
- ALL GYP BD WALLS ARE TO RECEIVE A LEVEL 4 FINISH U.O.N.
 - ALL WALLS TO BE PAINTED P-1 U.O.N.
 - REFERENCE ELEVATIONS FOR ADDITIONAL FINISHES AND LOCATIONS.
 - ALL FLOOR SLABS ARE TO BE PROPERLY PREPARED ACCORDING TO MANUFACTURERS REQUIREMENTS PRIOR TO INSTALLATION OF NEW SCHEDULED FLOOR FINISH MATERIALS.
 - ALL FLOOR FINISH TRANSITIONS ARE TO OCCUR AT CENTERLINE OF DOOR U.O.N.
 - AVOID FLOOR FINISH SLIVERS LESS THAN 4".
 - FLOOR TILE TO BE CENTERED IN ROOM U.O.N.
 - WALL TILE GROUT JOINTS TO ALIGN WITH FLOOR TILE GROUT JOINTS WHERE POSSIBLE.
 - ALL FLOOR FINISHES TO BE INSTALLED IN ACCORDANCE WITH MANUFACTURERS SPECIFICATIONS. FLOORING CONTRACTOR IS RESPONSIBLE FOR INSPECTION OF SLAB CONDITION PRIOR TO FLOOR FINISH INSTALLATION.
 - CONTRACTOR TO PURCHASE AN EXCESS OF 10% OF ALL CARPET, TILE, AND RESILIENT FLOOR FINISHES FOR ATTIC STOCK.
 - ALL COLUMN SURROUNDS TO BE PAINTED P-1 U.O.N.
 - REF. MEP DWGS FOR LOCATION AND SIZE OF FLOOR MOUNTED POWER/DATA RECEPTACLE.
 - INSTALL WALL BASE BEHIND ALL FREESTANDING EQUIPMENT.
 - ALL WALLS TO RECEIVE WALL BASE T-9 U.O.N.
 - PAINT FINISHES TO BE AS FOLLOWS:
WALLS: EGG SHELL
DOORS & FRAMES: SEMI-GLOSS
CEILINGS & EXPOSED DECK/DUCT/WORKIECT: DRYFALL
 - FLOOR HATCH SHOWN FOR DIRECTION ONLY. REF. FINISH SCHED. FOR INSTALL PATTERN.

FINISH PLAN SYMBOL LEGEND

	AREA NOT IN SCOPE OF WORK
	ACCENT WALL SPEC
	FINISH TAG INCLUDES: ROOM NAME, ROOM NUMBER, FLOOR BASE, FINISH
	TRANSITION IN FLOORING FINISHES. SEE DOOR SCHEDULE ON A101 FOR MORE INFORMATION

1 SERVICE LEVEL - FINISH PLAN
A901 1/8" = 1'-0"

THE RINKSIDE LOUNGE
PRUDENTIAL CENTER
147-191 MULBERRY STREET, NEWARK, NJ 07102

No. _____
Date _____ Revision _____

KSS ARCHITECTS
Princeton | Philadelphia
337 Witherspoon Street
Princeton, NJ 08542
t: 609.921.1131

BD ENGINEERING
44 MAIN ST.
FARMINGDALE, NJ 07727
t: 732.886.5432

PHELPS CONSTRUCTION GROUP
315 WOOTTON STREET - UNIT K
BOONTON, NJ 07005
T. 973.402.0004

LEVY RESTAURANTS
980 N. MICHIGAN AVE.
CHICAGO, IL 60611
T. 847.875.9813

KSS

ISSUE FOR CONSTRUCTION
Project No.: 2023-23097
Issued: 06/23/23
FINISH PLAN

A901

7/26/2023 2:11:54 PM C:\Users\avittoria\Documents\23097_Prudential Center Rinkside Lounge_Revit\2023_Avittoria.rvt