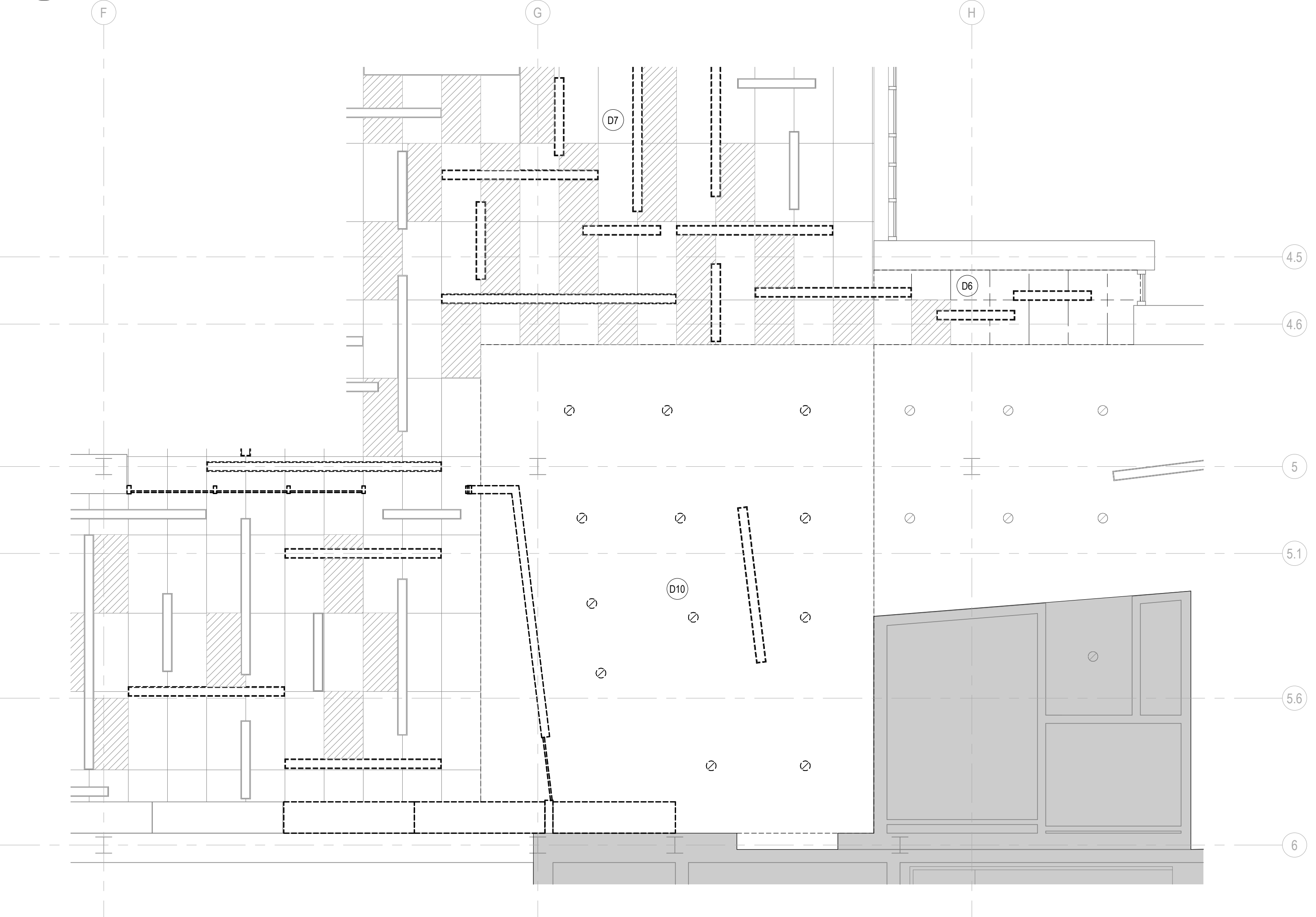


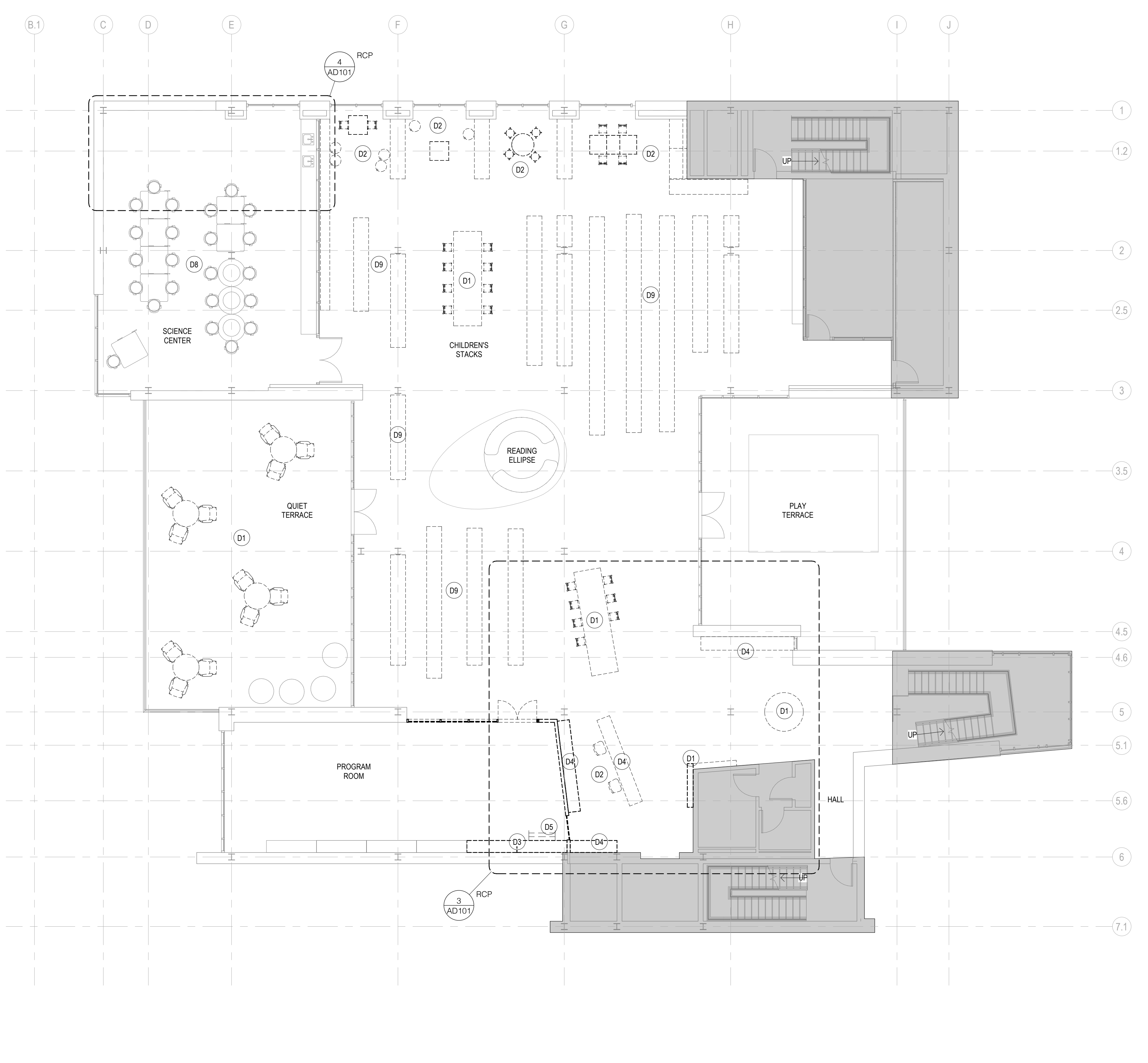
4 ENLARGED SCIENCE CENTER DEMOLITION RCP
AD101 1/4" = 1'-0"



3 ENLARGED ENTRY/RECEPTION DEMOLITION RCP
AD101 1/4" = 1'-0"

DEMOLITION PLAN LEGEND

AREA NOT IN SCOPE OF WORK	EXISTING CEILING GRID AND TILE TO REMAIN	EXISTING RECESSED CAN LIGHT TO REMAIN
DEMOLITION KEY NOTE	CEILING GRID OPEN TO DECK	EXISTING RECESSED CAN LIGHT TO BE REMOVED AND SALVAGED FOR POTENTIAL REUSE
EXISTING CONSTRUCTION OR FURNITURE TO REMAIN	EXISTING LINEAR LIGHT FIXTURE TO REMAIN	
EXISTING CONSTRUCTION OR FURNITURE TO BE DEMOLISHED	EXISTING LINEAR LIGHT FIXTURE TO BE REMOVED AND SALVAGED FOR POTENTIAL REUSE	
EXISTING CEILING GRID AND TILE TO BE DEMOLISHED		



1 DEMOLITION PLAN LEVEL 3
AD101 1/8" = 1'-0"

GENERAL DEMOLITION NOTES:

1. ALL EXISTING CARPET TO BE DEMOLISHED.

DEMO PLAN KEY NOTES	
KEY	NOTE
D1	FURNITURE TO BE REMOVED.
D2	FURNITURE TO BE SALVAGED FOR POTENTIAL RELOCATION.
D3	MILLWORK TO BE PARTIALLY DEMOLISHED. SEE IMAGE 1 OF EXISTING MILLWORK.
D4	MILLWORK TO BE DEMOLISHED IN FULL.
D5	LADDER TO BE REMOVED. SEE IMAGE 1 OF EXISTING MILLWORK (LADDER SHOWN).
D6	CEILING GRID TO BE PARTIALLY DEMOLISHED.
D7	CEILING GRID AND TILE TO REMAIN IN THIS AREA.
D8	ALL FURNITURE TO REMAIN IN THIS AREA.
D9	BOOK STACKS TO BE RELOCATED.
D10	GYPSUM CEILING TO BE PARTIALLY DEMOLISHED.



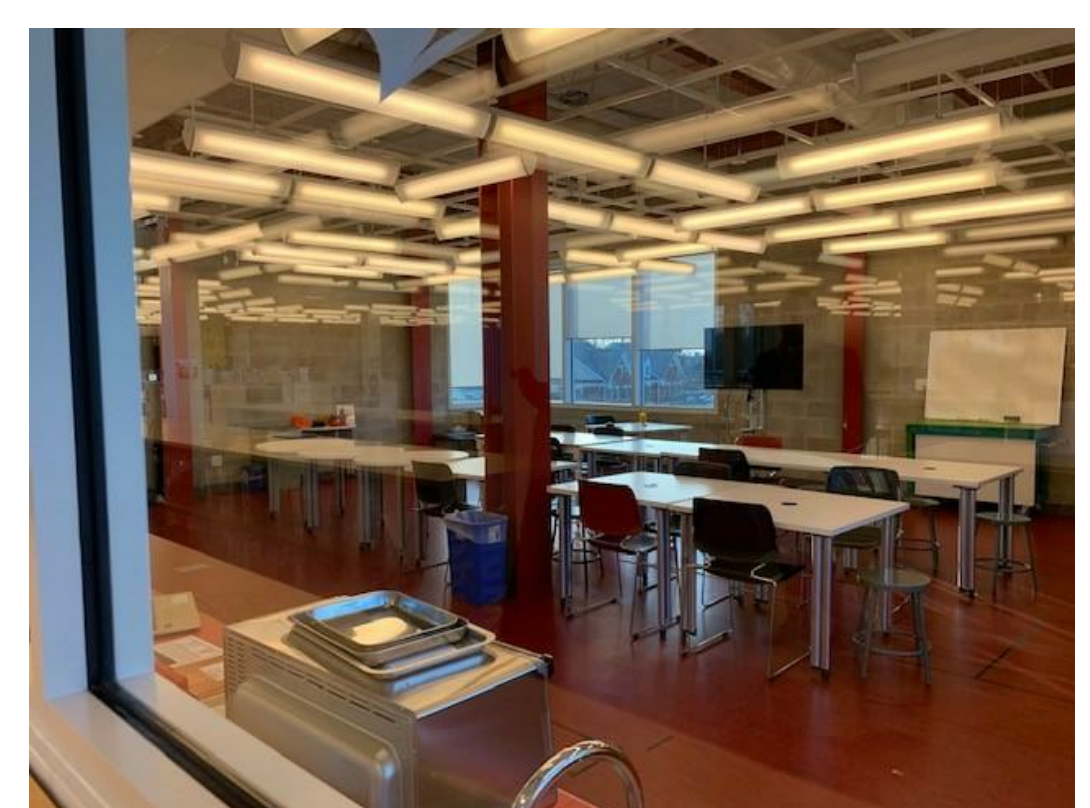
1 - PROGRAM ROOM MILLWORK



2 - PROGRAM ROOM CEILING



3 - READING ELLIPSE



4 - SCIENCE CENTER



5 - RECEPTION



6 - STACKS AND TABLE

2 EXISTING CONDITIONS
AD101 1/8" = 1'-0"

NOT FOR
CONSTRUCTION

PLAINSBO RO PUBLIC LIBRARY
RENOVATION
PLAINSBO RO PUBLIC LIBRARY
9 VAN DOREN ST.
PLAINSBO RO TOWNSHIP, NJ 08536

No.	Date	Description

KSS ARCHITECTS
337 Witherspoon Street
Princeton, NJ 08542
t: 609.921.1131

www.kssarchitects.com

KSS

BUDGET DRAWINGS

Project No.: 22837
Issued: 09/24/2020
DEMOLITION PLAN
AND RCPS

AD101

